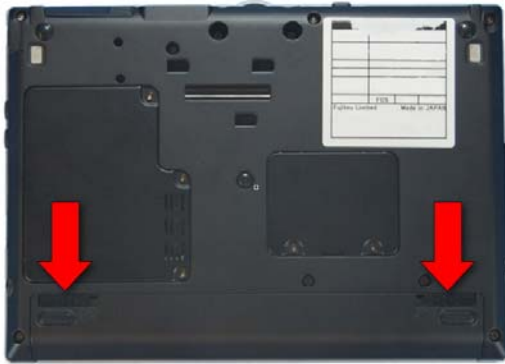


T e c h n i c a l P r o c e d u r e

LifeBook P1610 Display Rear Cover Replacement

ESD Precautions are required when working on this LifeBook computer.

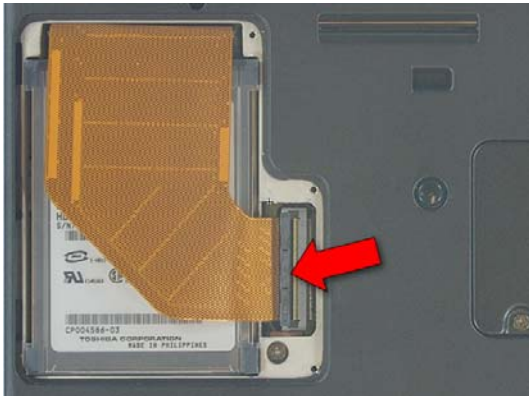
Make sure the LifeBook is turned off before beginning this procedure.



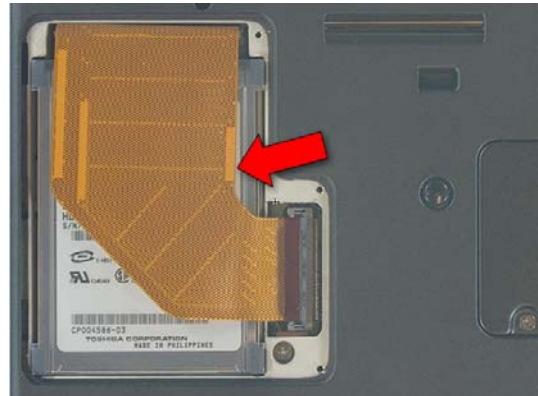
1. Turn the LifeBook over and remove the battery



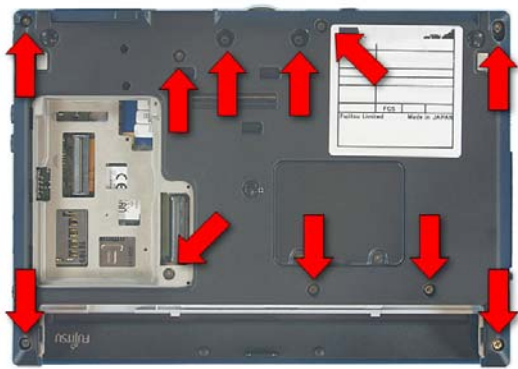
2. Extract these 3 screws from the Hard Disk Drive cover and lift it off.



3. Release the cable by flipping the latch up.



4. Lift the Drive out.



5. Extract 11 screws from the lower case.



6. Extract 2 screws from the rear of the LifeBook.



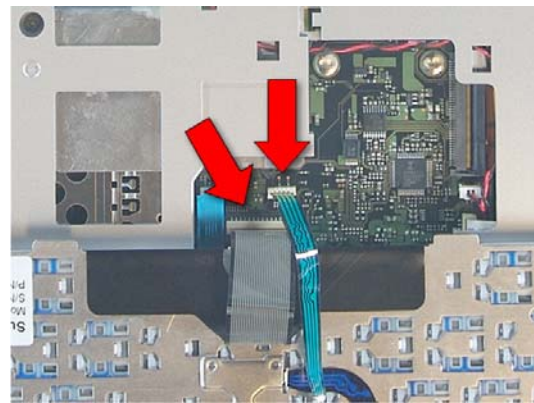
7. Open the LifeBook and lay it flat.



8. Use a plastic pry tool to remove the keyboard upper trim.



9. Lift the top edge of the keyboard up and turn it over



10. Disconnect the keyboard and ClickPoint cables from the system board by pulling them gently.



11. Tilt the Display up and rotate it ¼ turn.



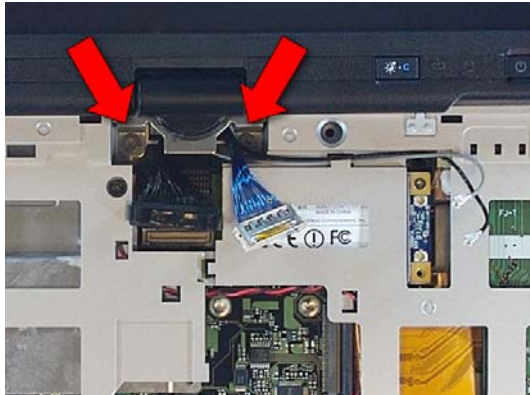
12. Slide out the lower hinge cover.



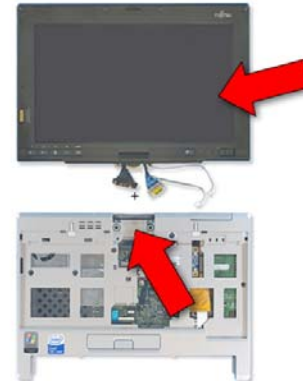
13. Turn the Display back and lay it down.



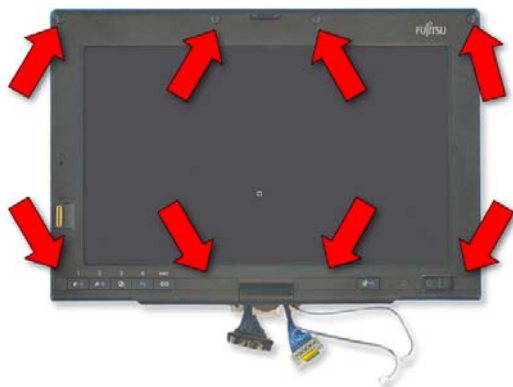
14. Disconnect 2 Display cables from the system board and the 2 antenna cables from the WLAN Card.



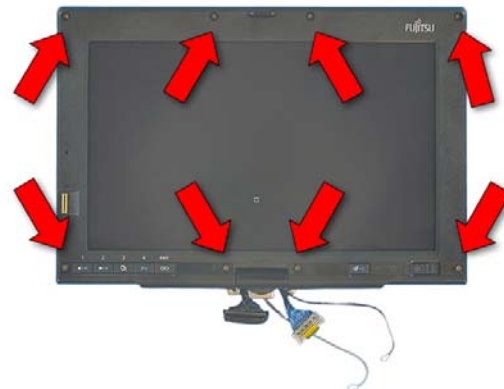
15. Extract 2 screws from the Display hinge.



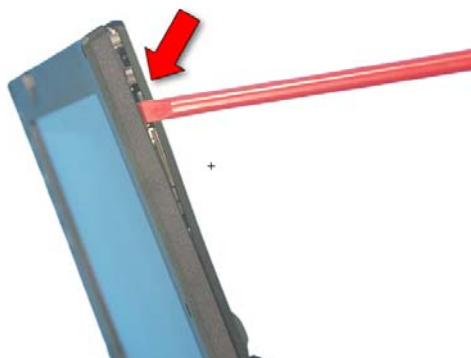
16. Lift the Display off the lower assembly.



17. Remove 8 screw covers from the front of the display.



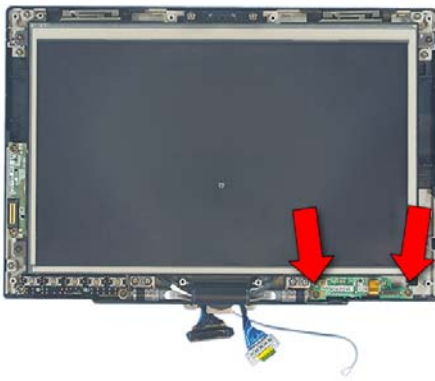
18. Extract 8 screws from the front of the display.



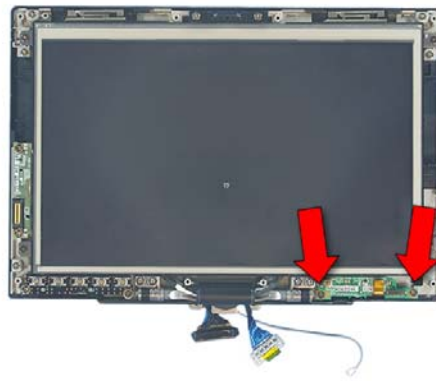
19. Using the plastic pry tool pry around the perimeter of the display to release the front cover from the rear.



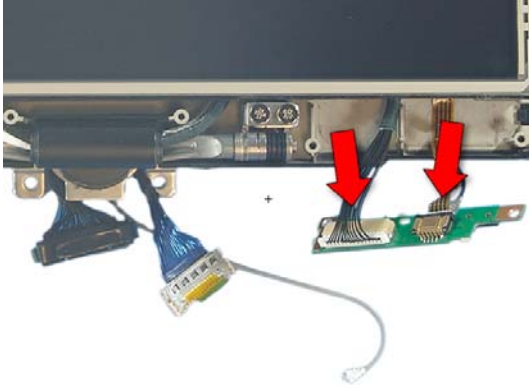
20. Gently slide the pry tool between the screen and the front cover to release the double sided tape located there.



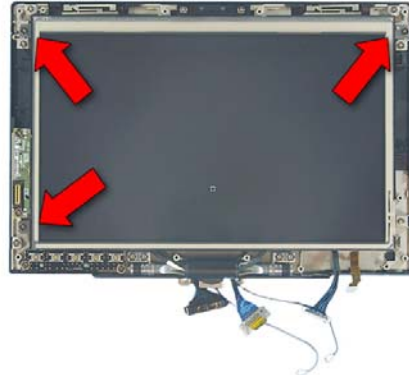
21. Lift the front cover off.



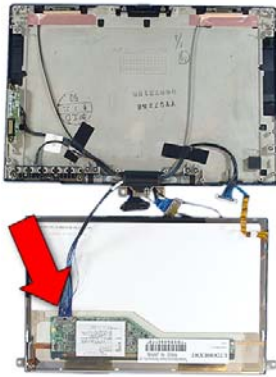
22. Extract 2 screws from the power switch board and turn it over.



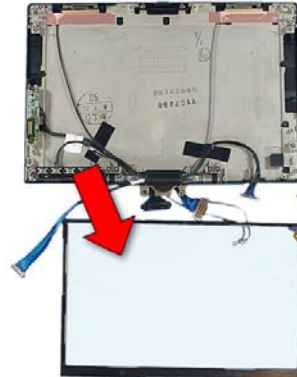
23. Disconnect the 2 cables from the board and lift it out.



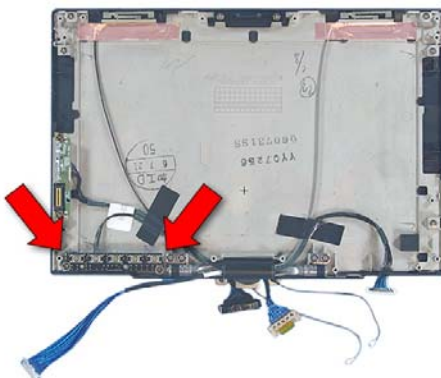
24. Extract 3 screws securing the LCD.



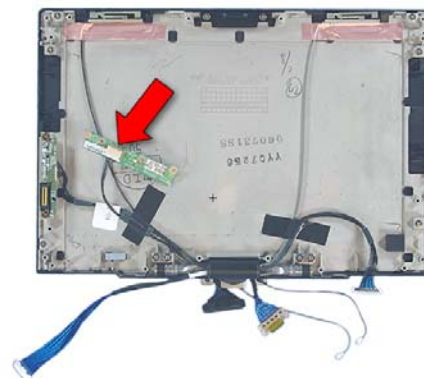
25. Tilt the LCD up turn it over and disconnect its cable.



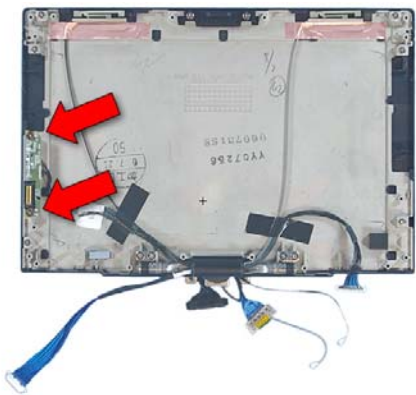
26. Lift the LCD off the digitizer.



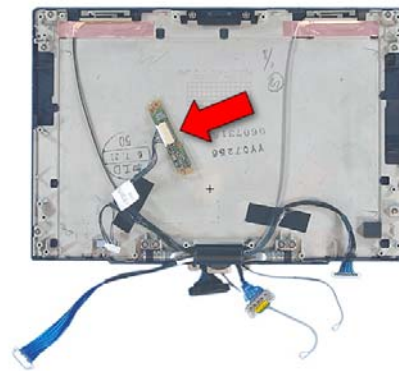
27. Extract 2 screws from the Tablet button board.



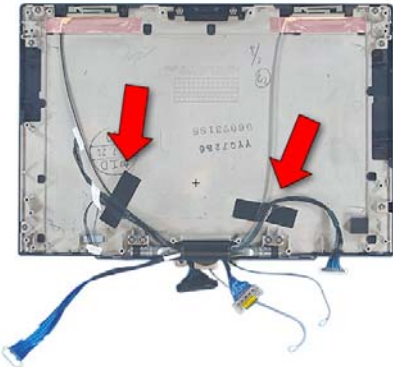
28. Disconnect its cable and lift the board out.



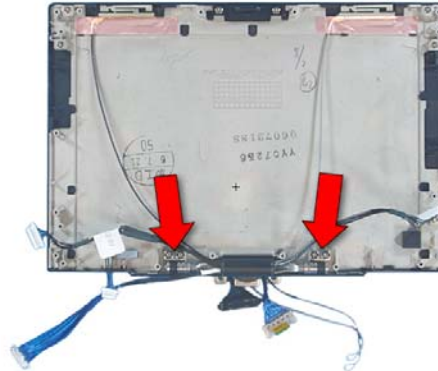
29. Extract 2 screws from the Fingerprint sensor board.



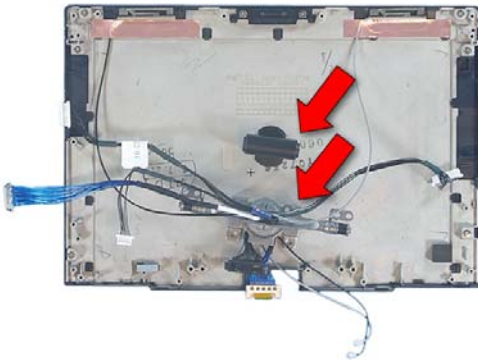
30. Disconnect its cable and lift the board out.



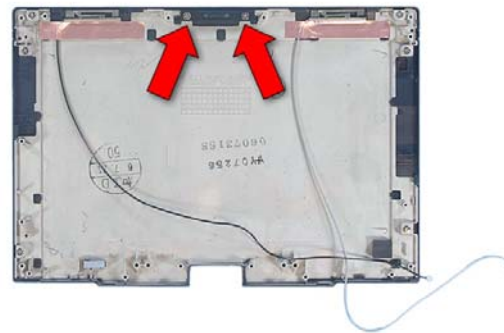
31. Remove the tape securing the cables to the rear cover.



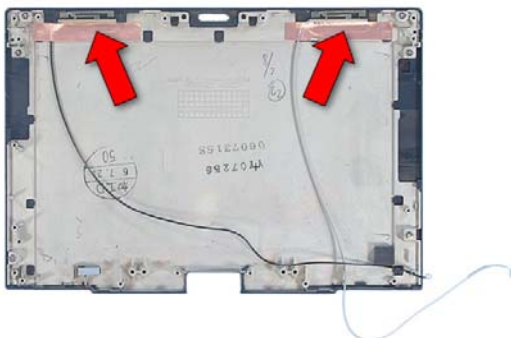
32. Extract 4 screws securing the hinge to the rear cover.



33. Lift the hinge out and slide the hinge cover off.



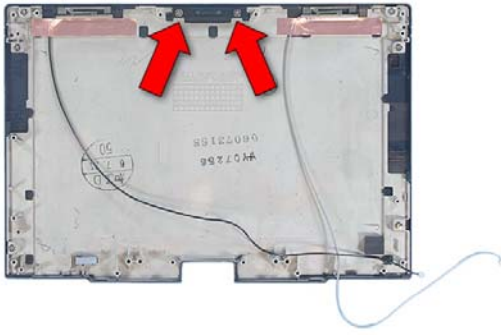
34. Extract 2 screws from the display latch and lift it out.



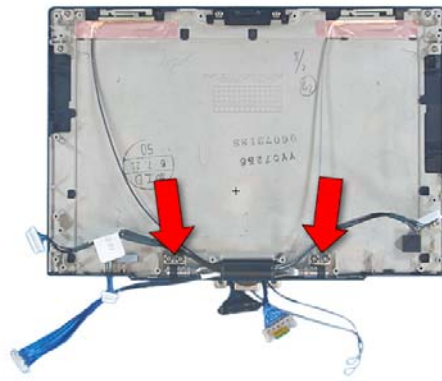
35. Remove the copper tape securing the 2 antennas and lift them and their cables out.



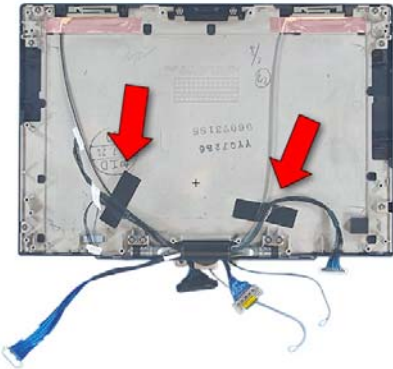
36. Insert the 2 antennas into the new rear cover and secure them with copper tape.



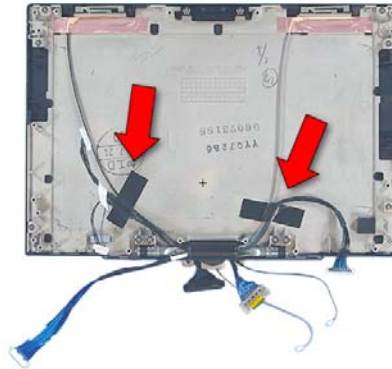
37. Insert the latch into the rear cover and secure it with 2 screws.



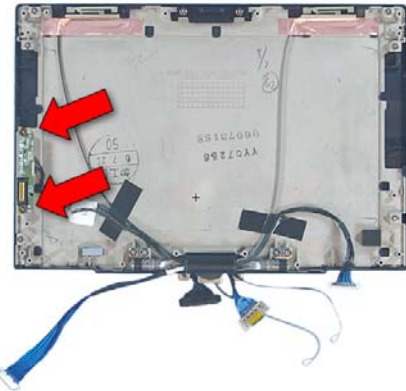
38. Place the hinge cover onto the hinge and secure the hinge to the rear cover with 4 screws.



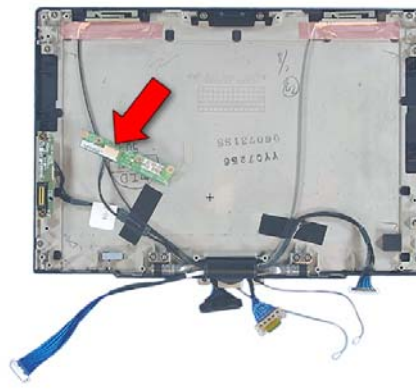
39. Secure the cables to the rear cover with tape.



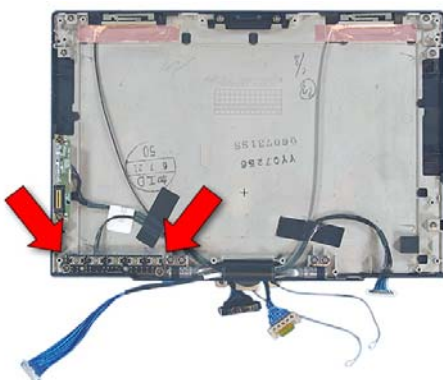
40. Connect the cable from the new rear cover assembly to the fingerprint sensor board.



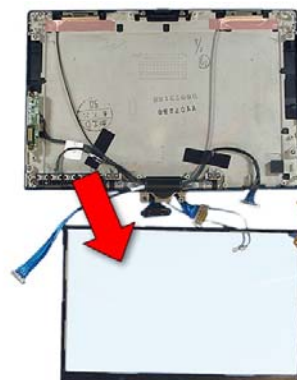
41. Secure the board to the rear cover with 2 screws.



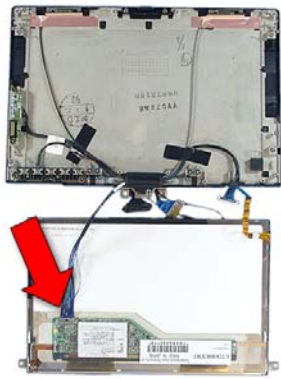
42. Connect the cable to the Tablet button board.



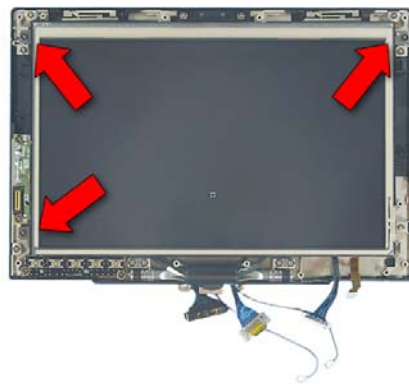
43. Secure it to the rear cover with 2 screws.



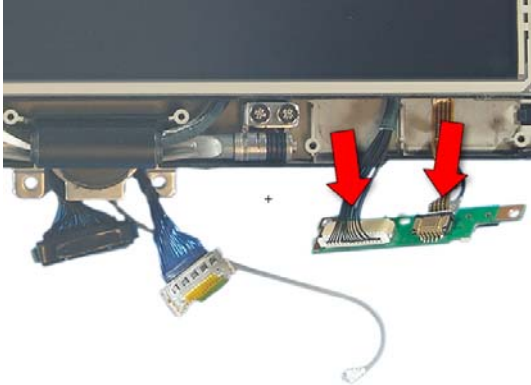
44. Place the LCD onto the digitizer. Make sure there is no dust between them.



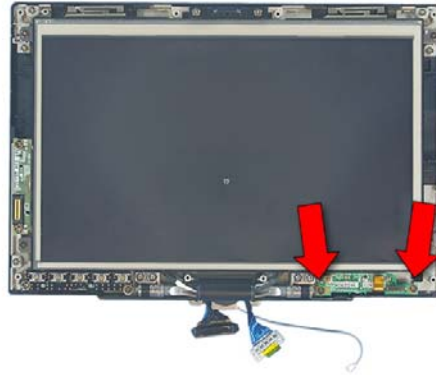
45. Connect the LCD cable and place the LCD into the rear cover.



46. Secure the LCD with 3 screws.



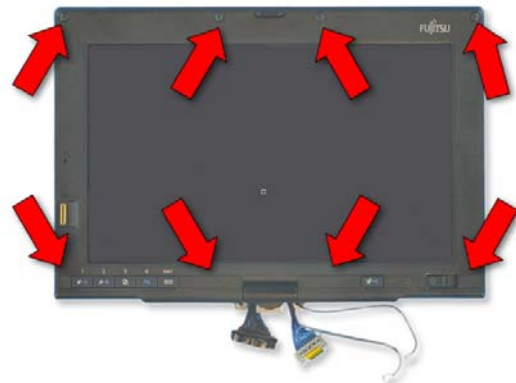
47. Connect the 2 cables to the power switch board and place it into the rear cover.



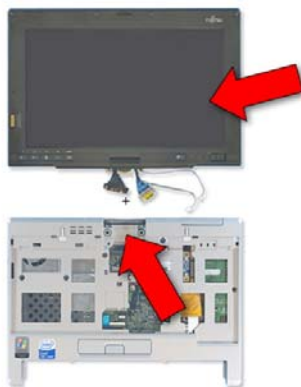
48. Secure it with 2 screws.



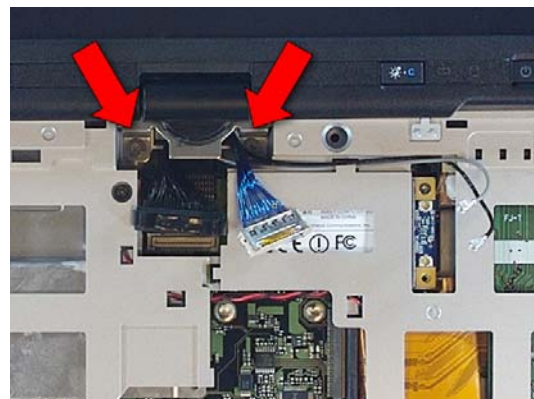
49. Press the front cover into place and secure it with 8 screws.



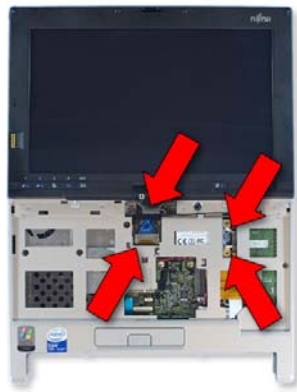
50. Place 8 screw covers over these screws.



51. Extract 3 screws from the PCB.



52. Secure the display with 2 screws in the hinge.



53. Attach the 2 display cables to the system board and the 2 antenna Cables to the WLAN card.



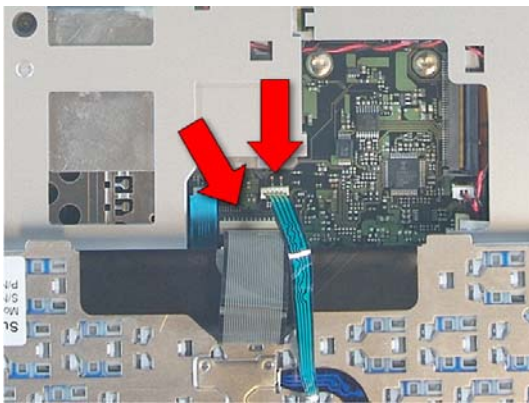
54. Tilt the display up and rotate it ¼ turn



55. Slide the lower hinge cover into place.



56. Turn the Display back and lay it down.



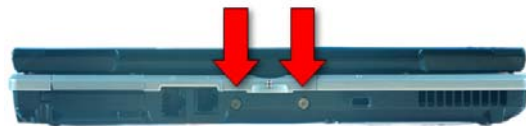
57. Plug in the cables for the keyboard and ClickPoint.



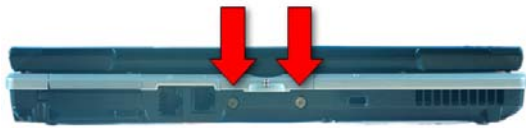
58. Turn the keyboard over and slide it into place



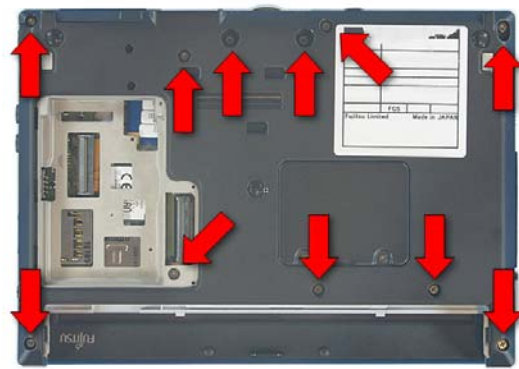
59. Press the keyboard upper trim into place.



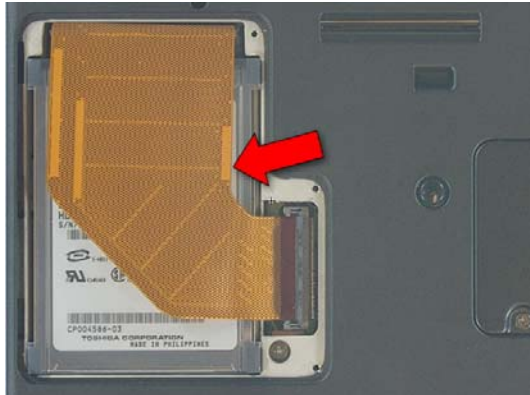
60. Close the LifeBook and turn it over.



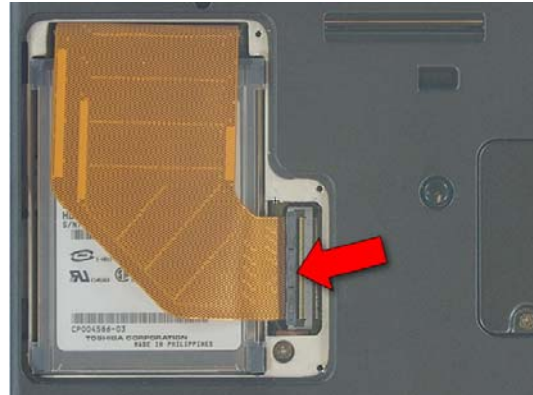
61. Insert 2 screws into the rear of the LifeBook.



62. Insert 11 screws into the lower case.



63. Insert the Hard Drive.



64. Press the latch down to lock the cable into place.



65. Replace the Drive cover and secure it with 3 screws.



66. Replace the battery.