

Technical Procedure

LifeBook P1610 Keyboard Replacement

ESD Precautions are required when working on this LifeBook computer.

Make sure the LifeBook is turned off before beginning this procedure.



1. Turn the LifeBook over and remove the battery



2. Extract 1 screw from the lower case.



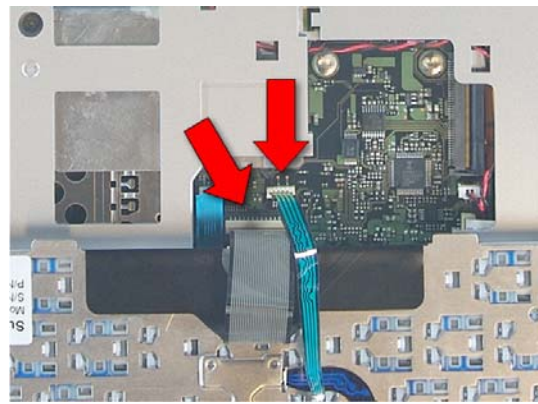
3. Open the LifeBook and lay it flat.



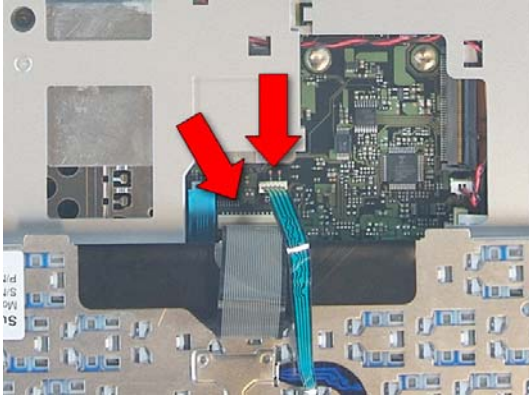
4. Use a plastic pry tool to remove the keyboard upper trim.



5. Lift the top edge of the keyboard up and turn it over



6. Disconnect the keyboard and ClickPoint cables from the system board by pulling them gently.



7. Plug in the cables for the new keyboard.



8. Turn the keyboard over and slide it into place



9. Press the keyboard upper trim into place.



10. Close the LifeBook and turn it over.



11. Replace the screw



12. Replace the battery.