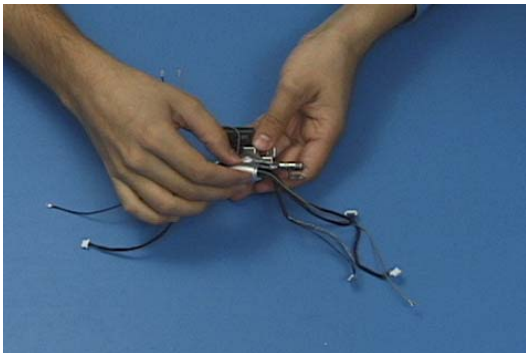


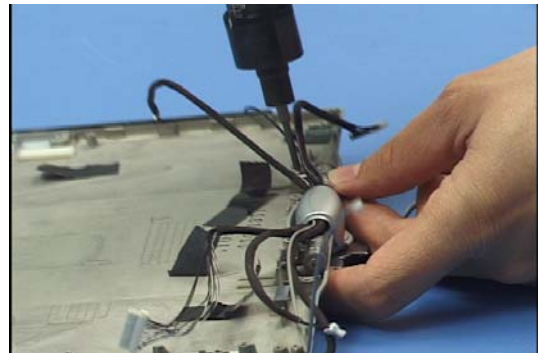
Technical Procedure

LifeBook P1500 Assembly

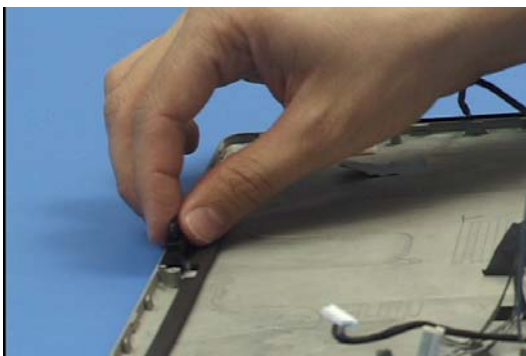
ESD Precautions are required when working on this LifeBook computer.



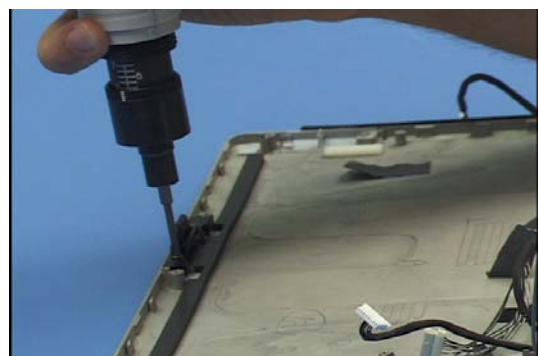
1. Start with the display hinge assembly and place the hinge cover over it.



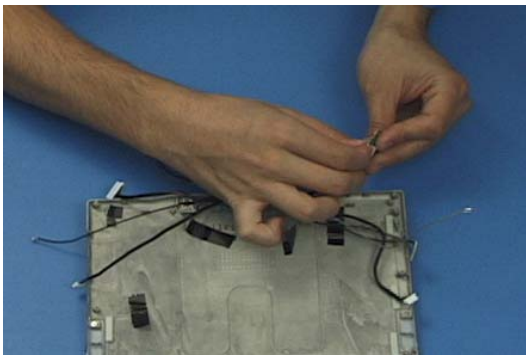
2. Insert the hinge assembly into the rear cover of the display and secure it with 4 screws.



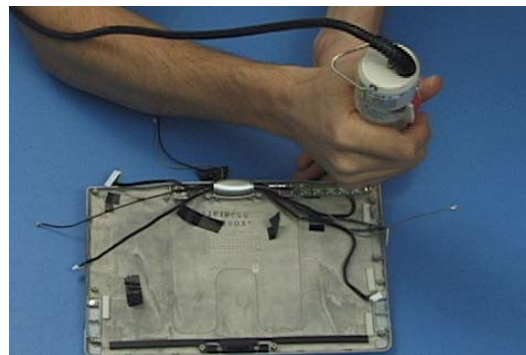
3. Insert the display latch into the rear cover.



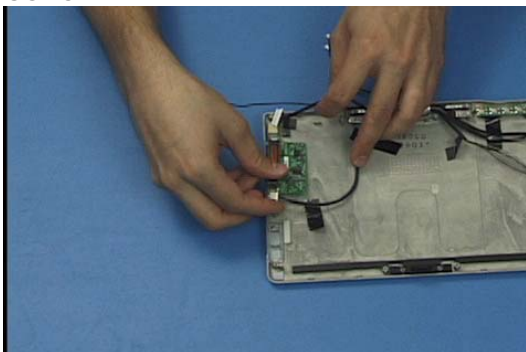
4. Secure it with 2 screws.



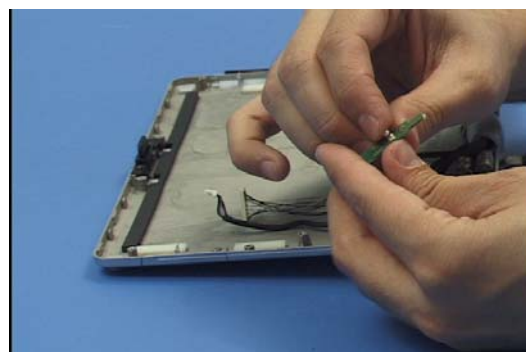
5. Connect the application panel PCB cable and place it into the cover.



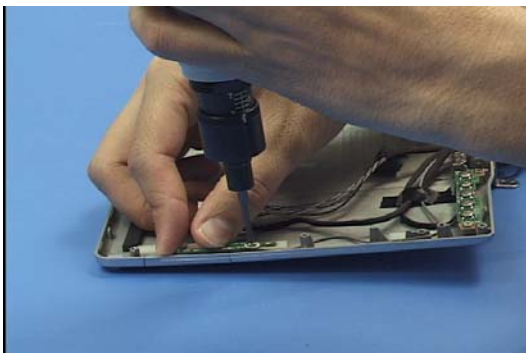
6. Secure it with 2 screws.



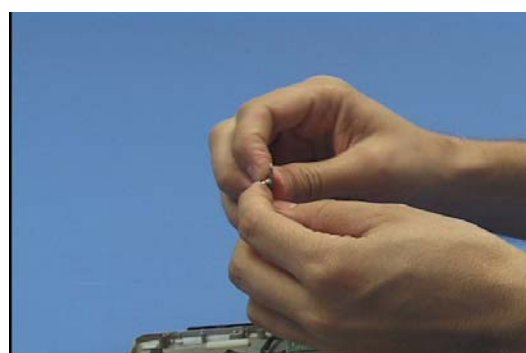
7. Connect the inverter power cable and place it into the cover.



8. Connect the cable to the right antenna and place it into the rear cover.



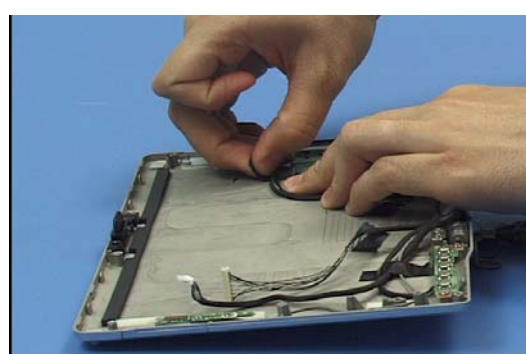
9. Secure it with 1 screw.



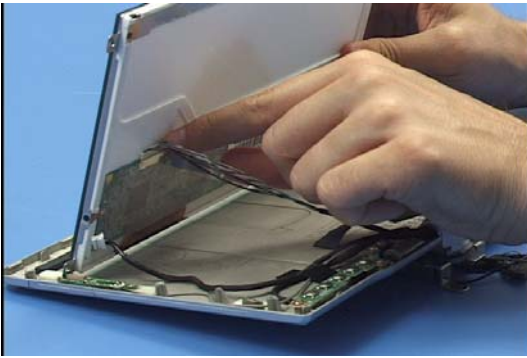
10. Connect the cable to the left antenna and place it into the rear cover.



11. Secure it with 1 screw.



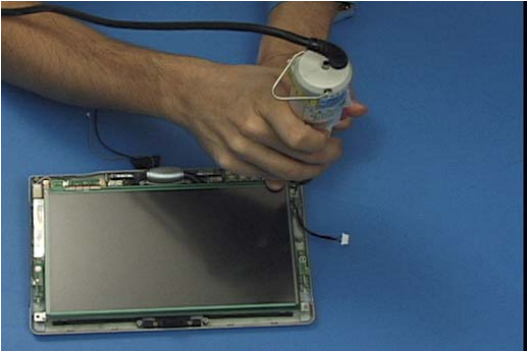
12. Tape the cables to the rear cover of the display.



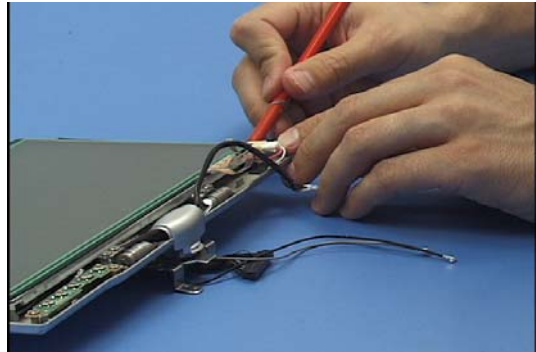
13. Set the LCD into the rear cover and connect its cable.



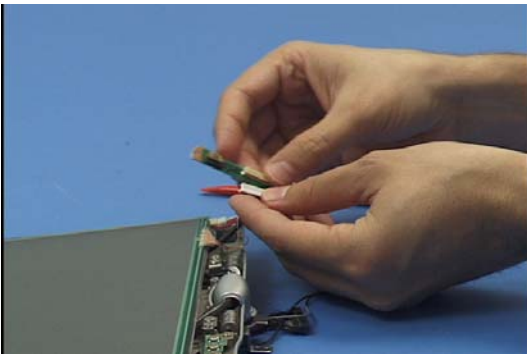
14. Secure the connection with tape.



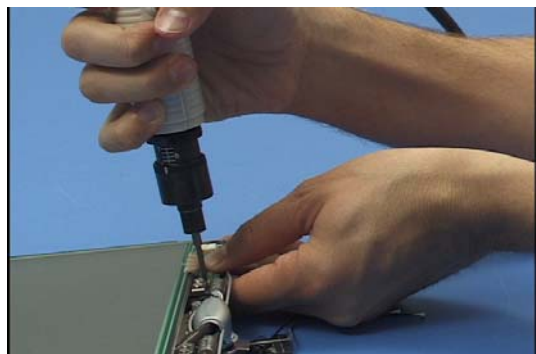
15. Lay the LCD down and secure it with 1 screw.



16. Connect the backlight cable to the inverter.



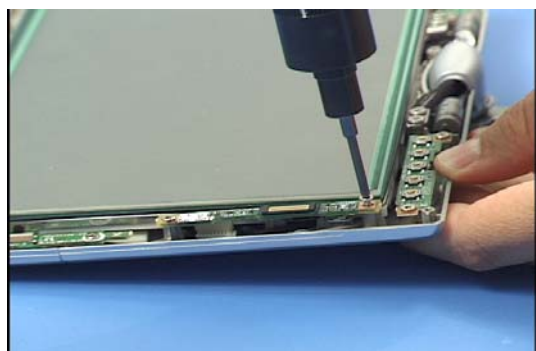
17. Connect the digitizer cable and power cable to the suspend switch PCB and place it into the rear cover.



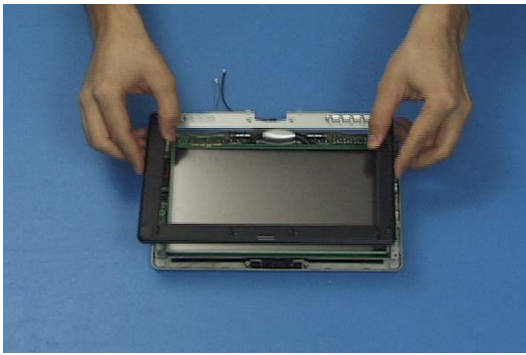
18. Secure it with 2 screws.



19. Connect the fingerprint scanner PCB cable and place it into the rear cover.



20. Secure it with 2 screws.



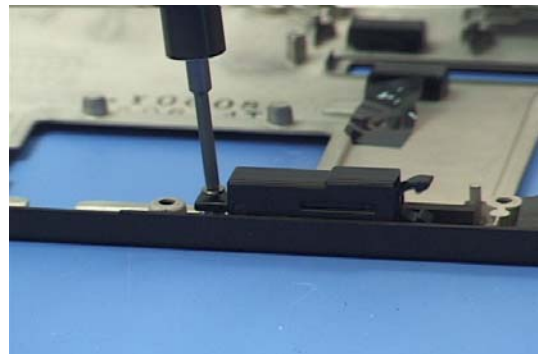
21. Place the front cover onto the display and press around the perimeter to snap it into place.



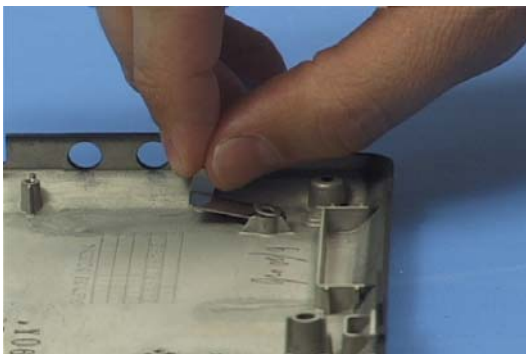
22. Insert 8 screws into the front of the display.



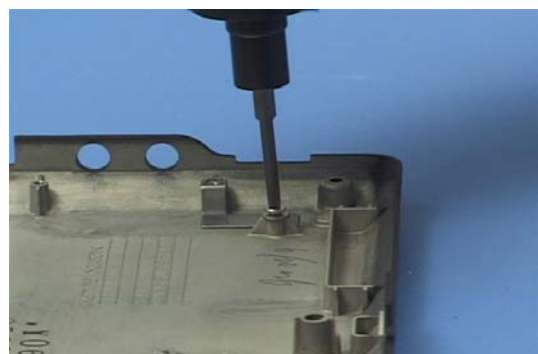
23. Cover them with 8 screw covers.



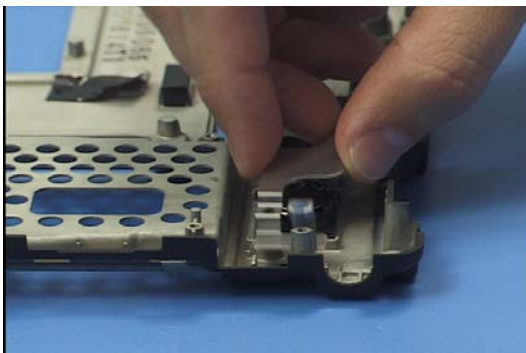
24. Insert the stylus holder into the lower case and secure it with 1 screw.



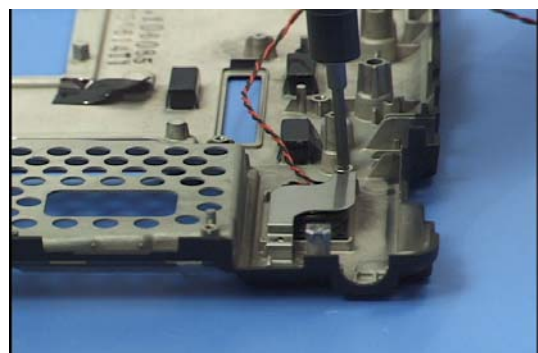
25. Insert the grounding strip.



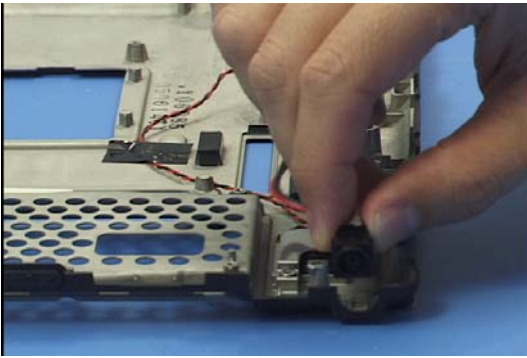
26. Secure it with 1 screw.



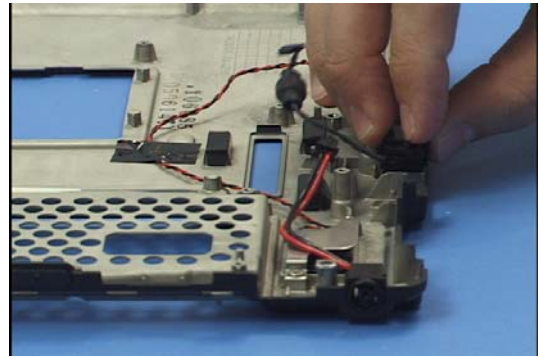
27. Insert the speaker and place its bracket over it.



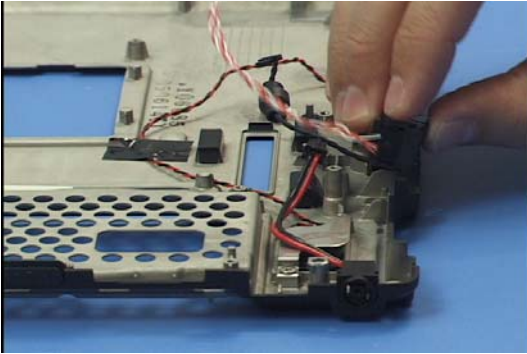
28. Secure both with 2 screws.



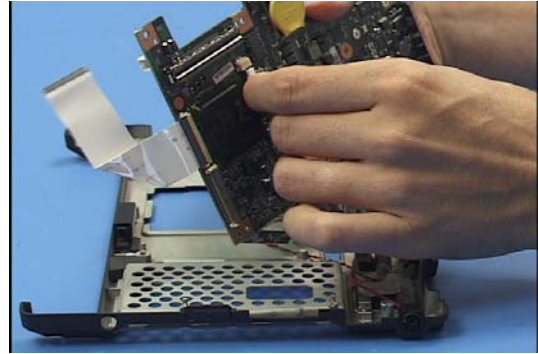
29. Insert the external DC connector.



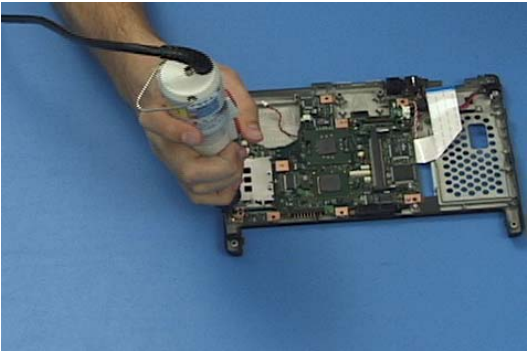
30. Insert the RJ11 connector.



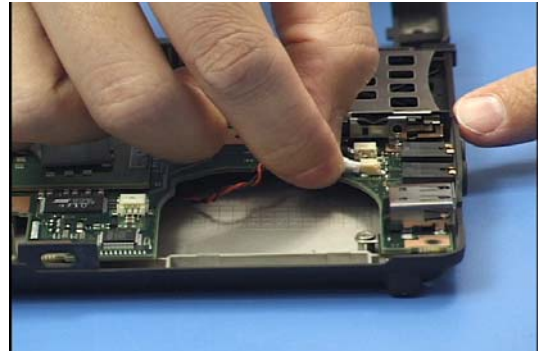
31. Insert the RJ45 connector.



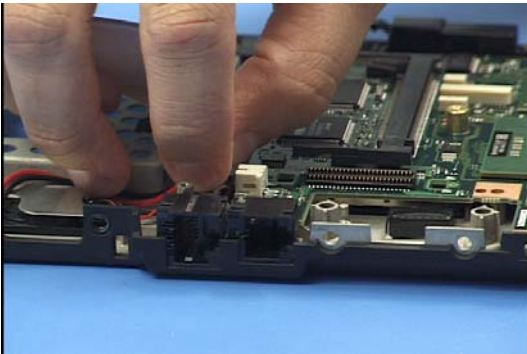
32. Connect the RJ45 connector's cable to the system board and place it into the lower case.



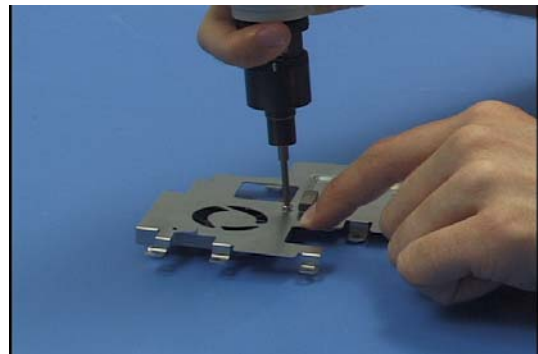
33. Secure the system board with 1 screw.



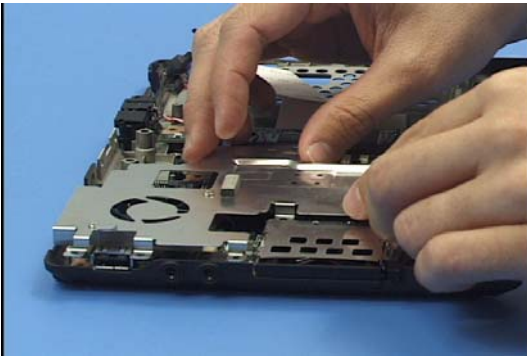
34. Connect the speaker cable to the system board.



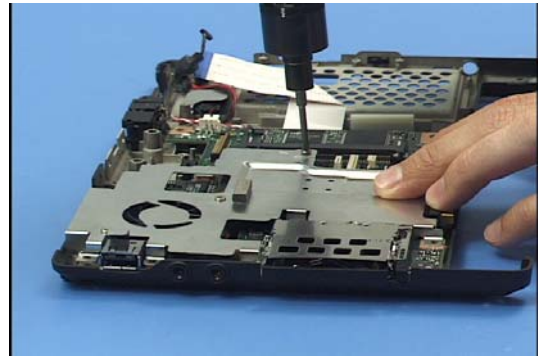
35. Connect the external DC connector cable to the system board.



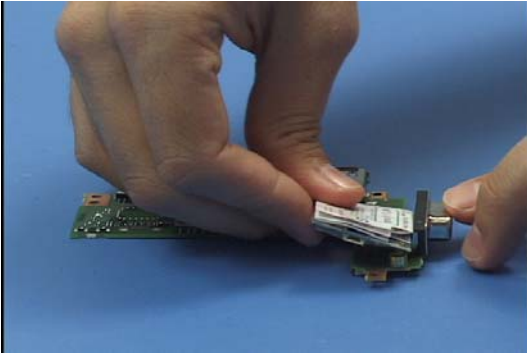
36. Attach the CPU fan to the metal shield with 2 screws.



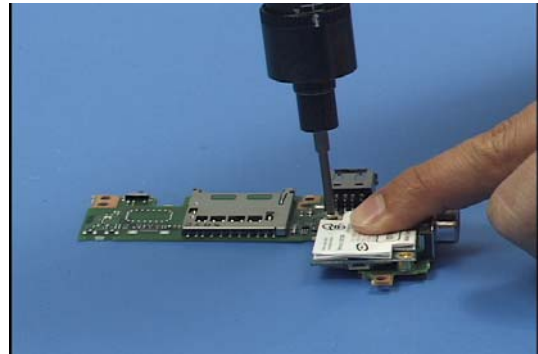
37. Place the metal shield over the system board.



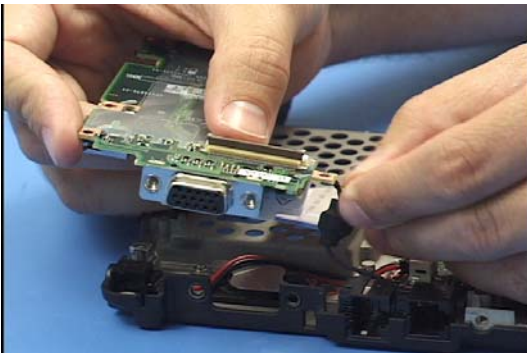
38. Secure it with 1 screw.



39. Press the modem into place on the Daughterboard.



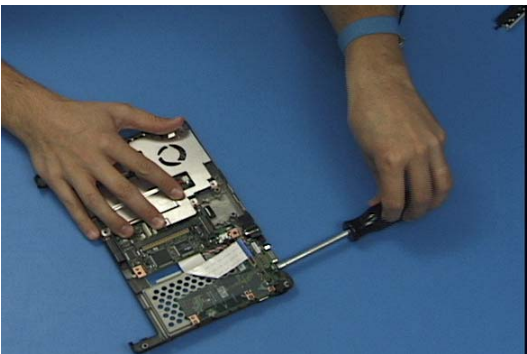
40. Secure it with 2 screws.



41. Connect the RJ11 connector's cable to the modem and lower the daughterboard into the lower case.



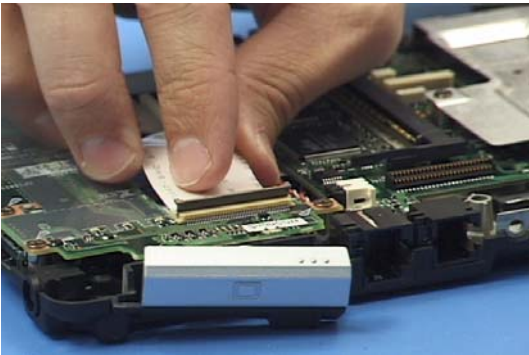
42. Secure the daughterboard with 4 screws.



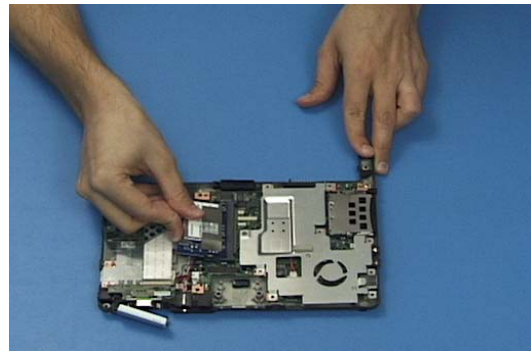
43. Insert 2 hex screws in the external VGA connector.



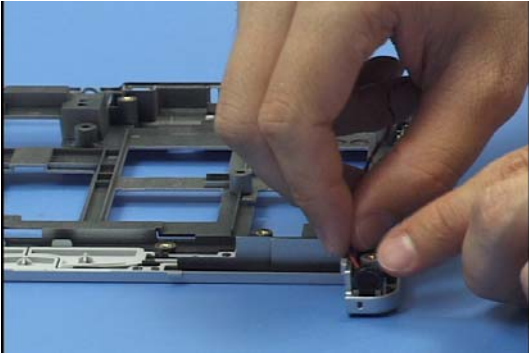
44. Insert the external VGA connector cover into the case.



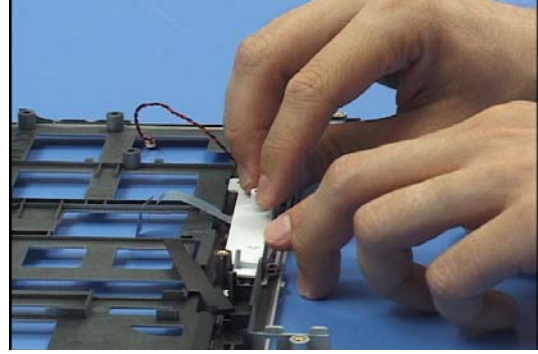
45. Connect the daughterboard's ribbon cable.



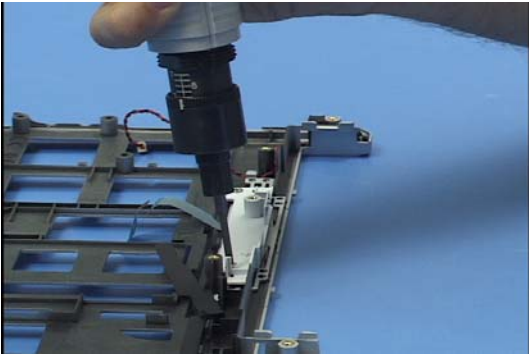
46. Insert the WLAN card into its slot and press it down to lock it.



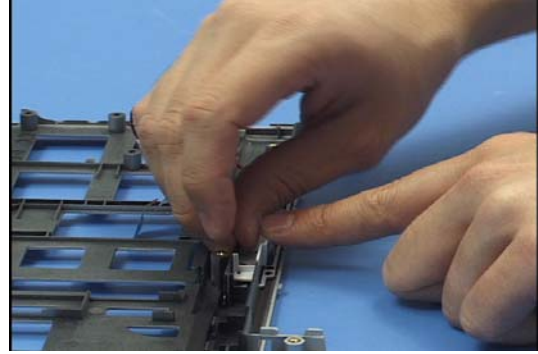
47. Insert the microphone into the upper case.



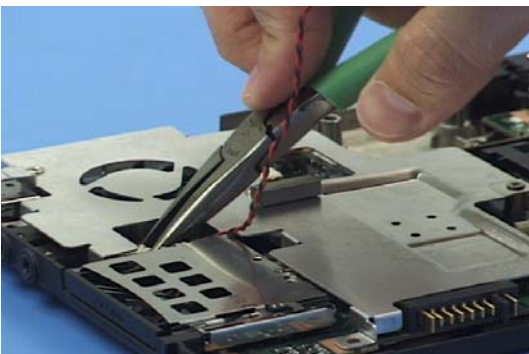
48. Insert the TouchPoint button assembly.



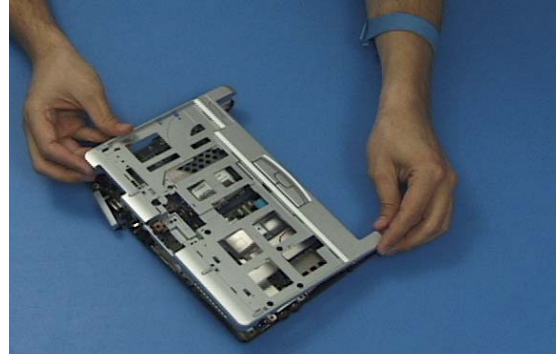
49. Secure it with 2 screws.



50. Press the adhesive guide into place.



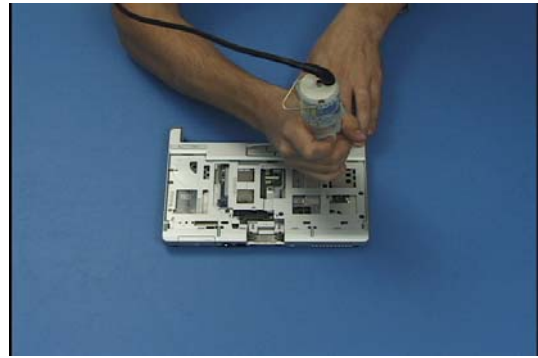
51. Connect the microphone cable to the system board.



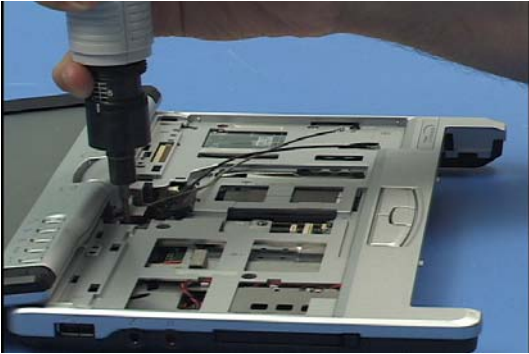
52. Place the upper case onto the lower.



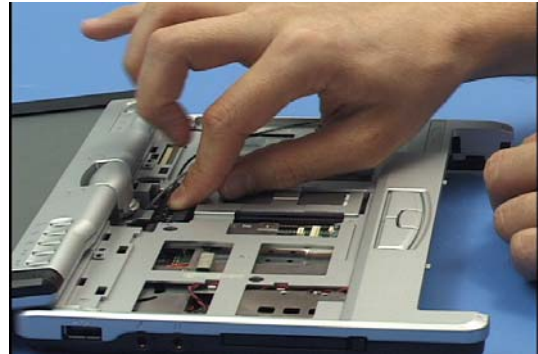
53. Connect the TouchPoint buttons cable.



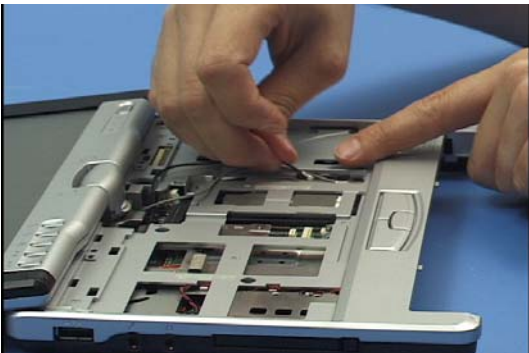
54. Secure the upper case with 6 screws.



55. Lower the display onto the lower assembly and secure it with 2 hinge screws.



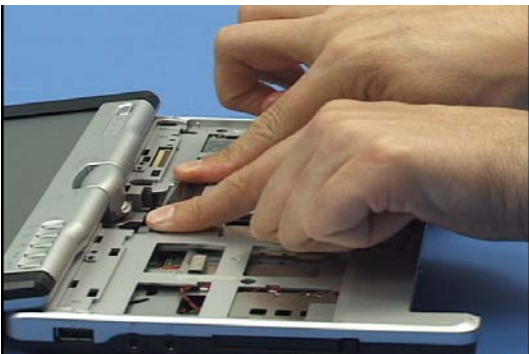
56. Connect the display cable to the system board.



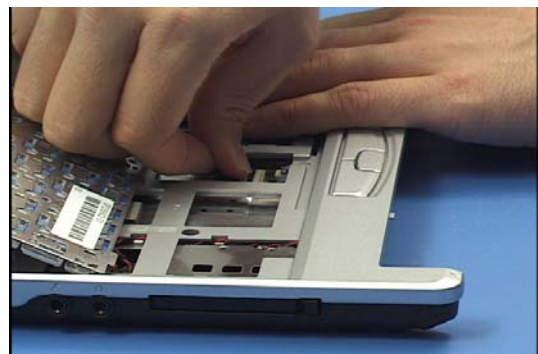
57. Connect the 2 antenna cables to the WLAN card and route the cables.



58. Place the metal bracket over the antenna cables.



59. Secure it with tape.



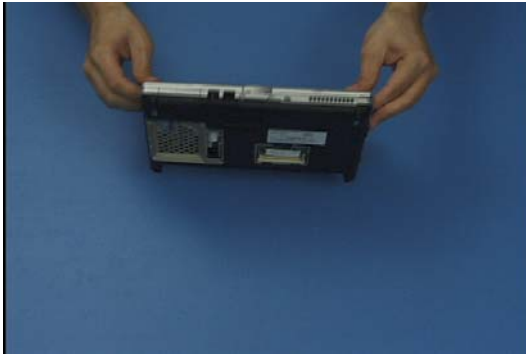
60. Connect the Keyboard cable and TouchPoint cable to the system board.



61. Slide the keyboard into place.



62. Press the keyboard upper cover into place.



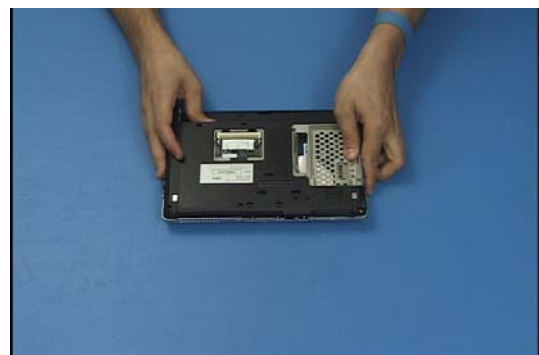
63. Close the unit most of the way and stand it on its front.



64. Insert 2 hinge screws.



65. Insert the rear hinge cover.



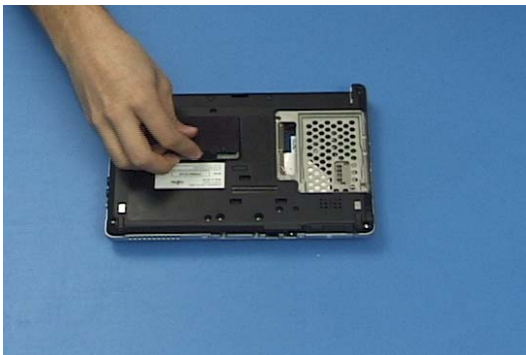
66. Close the unit and turn it over.



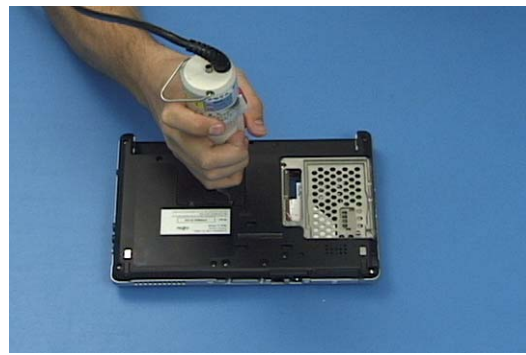
67. Insert 11 lower case screws.



68. Insert the RAM and press it down to lock it.



69. Place the RAM cover over it.



70. Secure the cover with 2 screws.



71. Insert the Hard Disk Drive.



72. Connect its cable.



73. Place the drive cover over it.



74. Secure the cover with 3 screws.



75. Insert the battery.