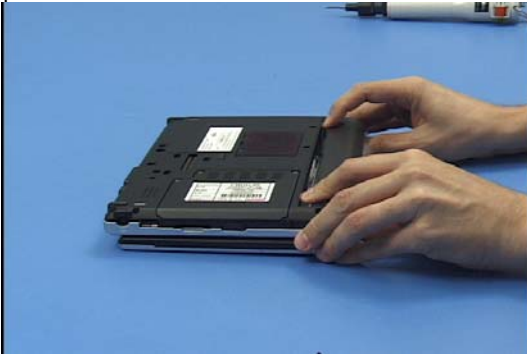


Technical Procedure

LifeBook P1500 Disassembly

ESD Precautions are required when working on this LifeBook computer.

Make sure the LifeBook is turned off before beginning this disassembly procedure.



1. Turn the LifeBook over and remove the battery.



2. Extract 3 screws from the Hard Disk Drive cover.



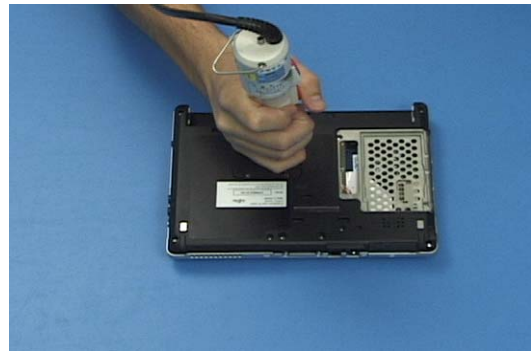
3. Remove the cover.



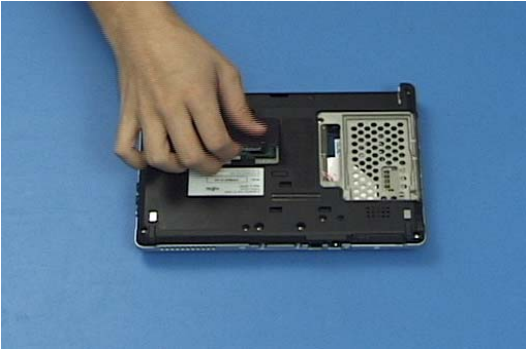
4. Disconnect the drive cable.



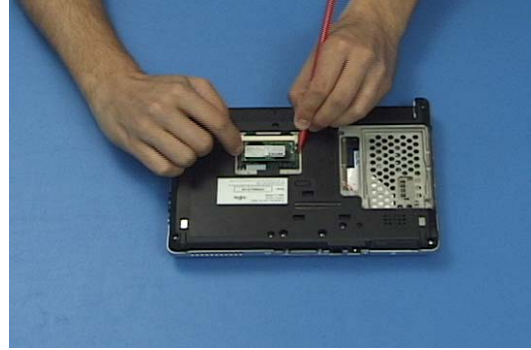
5. Lift out the drive.



6. Extract 2 screws from the RAM cover.



7. Remove the cover.



8. Press out on the locking clips to release the RAM and lift it out.



9. Extract 11 lower case screws.



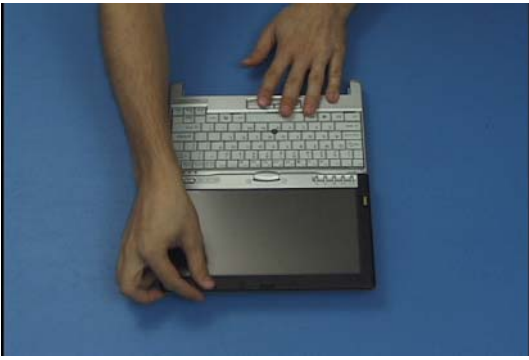
10. Turn the LifeBook over, open it slightly and stand it on its front.



11. Remove the rear hinge cover.



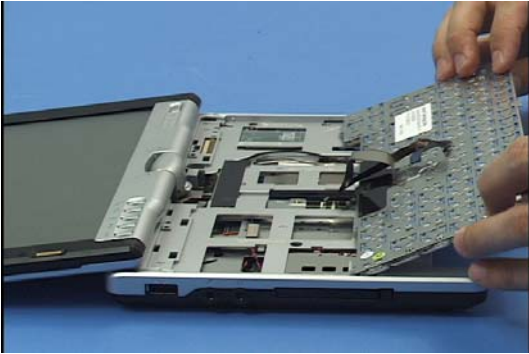
12. Extract the 2 hinge screws from the rear of the case.



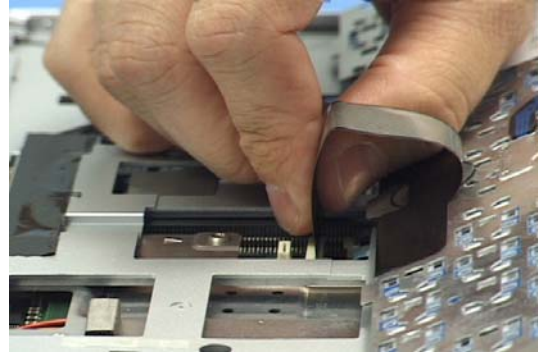
13. Open the LifeBook and lay it flat.



14. Use a plastic screwdriver to pry up the keyboard upper cover and lift it out.



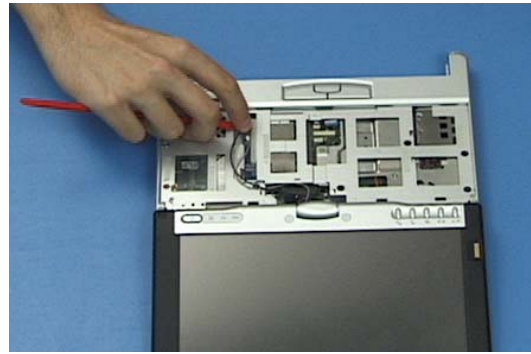
15. Lift up the keyboard.



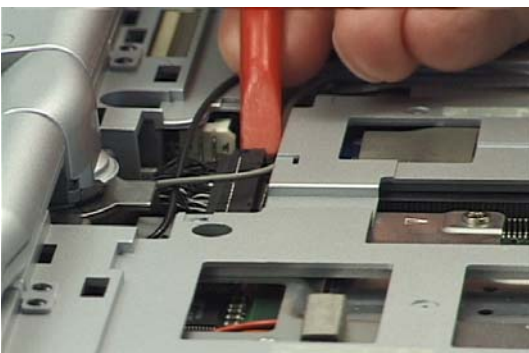
16. Disconnect the keyboard cable and the TouchPoint cable and lift the keyboard out.



17. Remove the tape and metal bracket over the antenna cables.



18. Disconnect the antenna cables from the WLAN card.



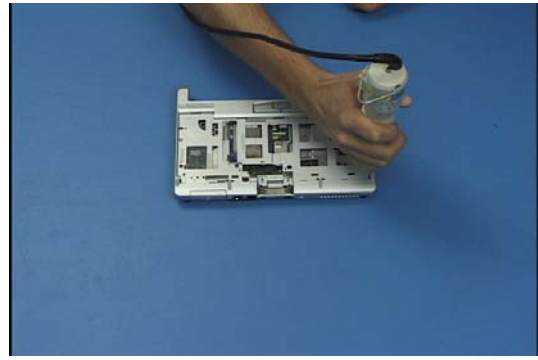
19. Disconnect the Display cable from the system board.



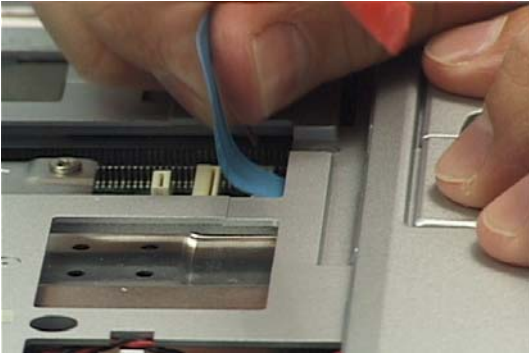
20. Extract 2 hinge screws.



21. Lift the display off of the lower assembly.



22. Extract 6 upper case screws.



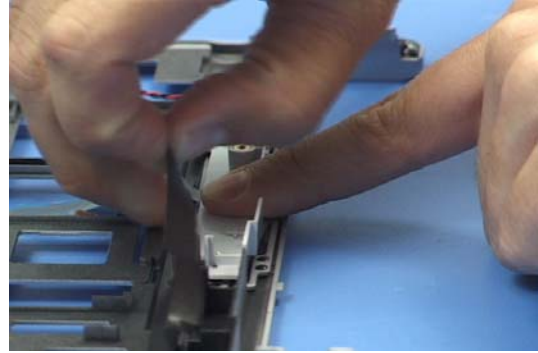
23. Disconnect the TouchPoint Buttons ribbon cable from the system board.



24. Lift up the upper case.



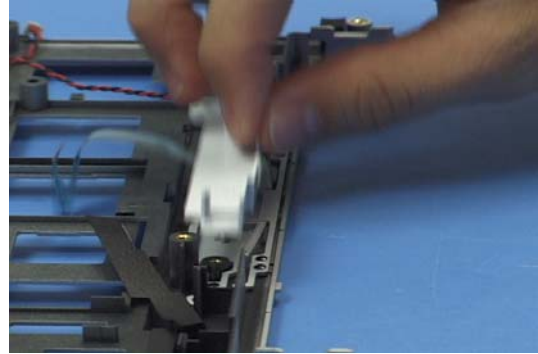
25. Disconnect the microphone cable and turn the upper case over.



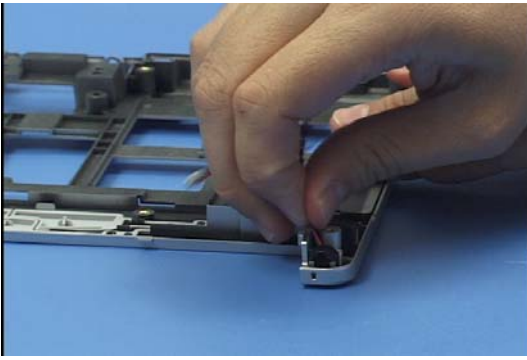
26. Peel the adhesive guide off of the TouchPoint Button assembly.



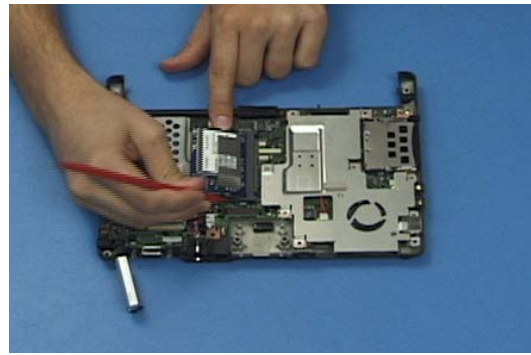
27. Extract 2 screws from it.



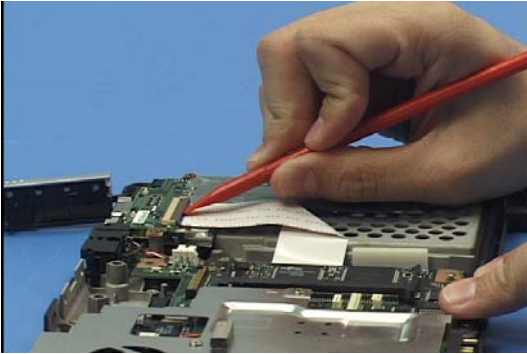
28. Lift the assembly out.



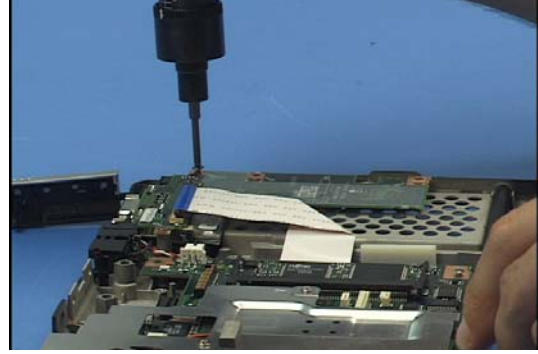
29. Lift out the microphone and its cable.



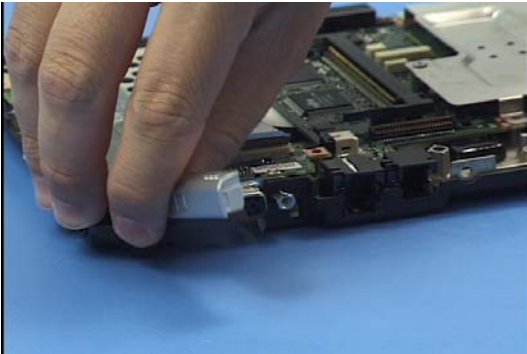
30. Press out on the locking clips to release the WLAN card and remove it.



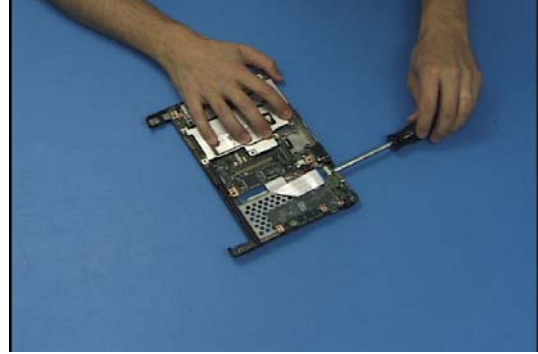
31. Disconnect the ribbon cable from the Daughterboard.



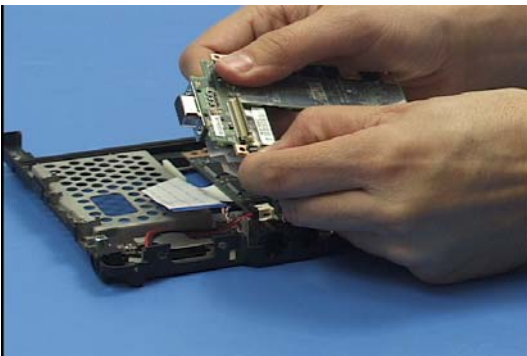
32. Extract 4 screws from the Daughterboard.



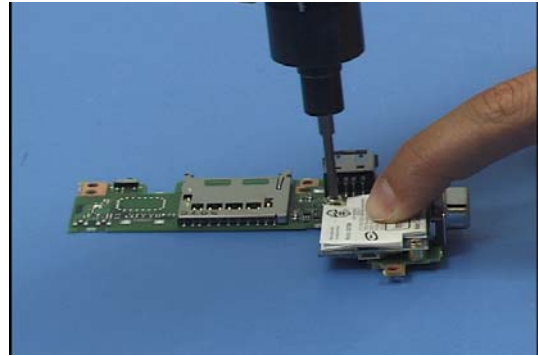
33. Lift out the External VGA connector cover.



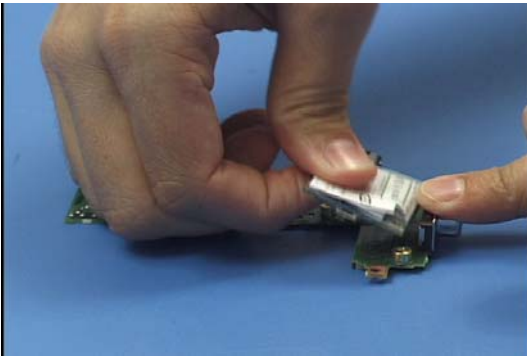
34. Remove 2 hex screws from the connector.



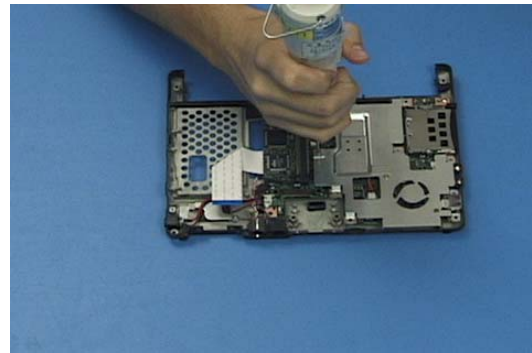
35. Lift out the daughterboard and disconnect the RJ11 connector cable from the modem.



36. Turn the daughterboard over and extract 2 screws from the modem.



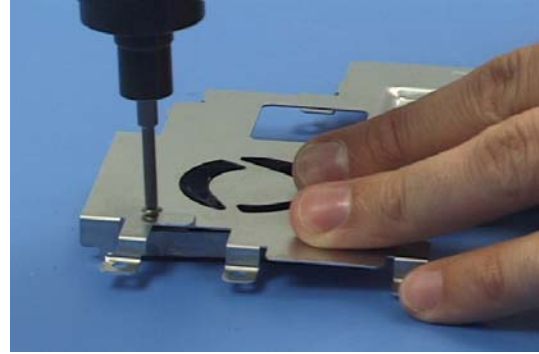
37. Lift it off.



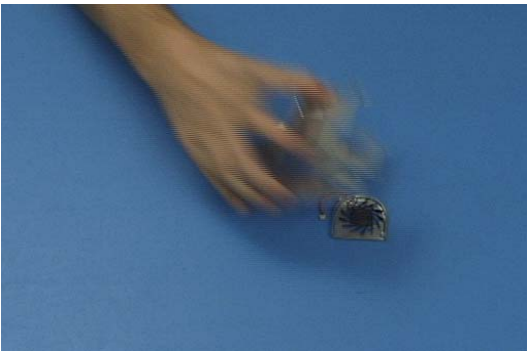
38. Extract 1 screw from the metal shield.



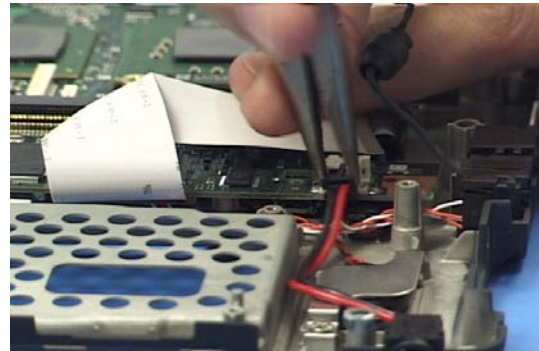
39. Disconnect the fan cable and lift the shield out.



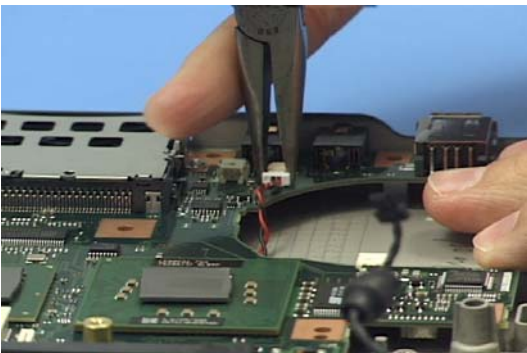
40. Extract 2 screws from the fan.



41. Remove it from the metal shield.



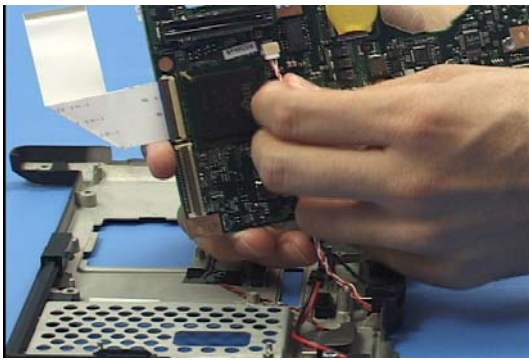
42. Disconnect the external DC cable from the system board.



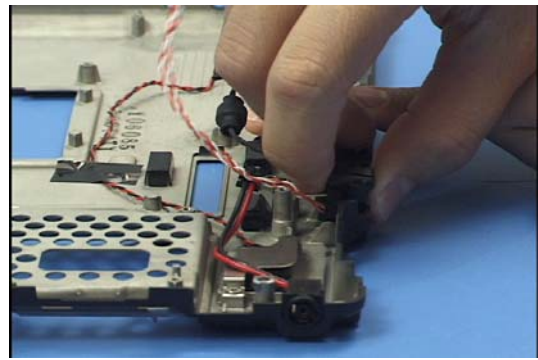
43. Disconnect the speaker cable from the system board.



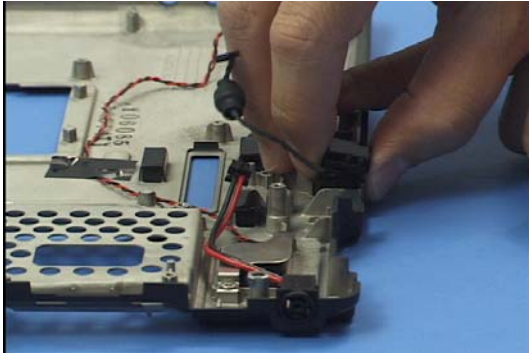
44. Extract 1 screw from the system board.



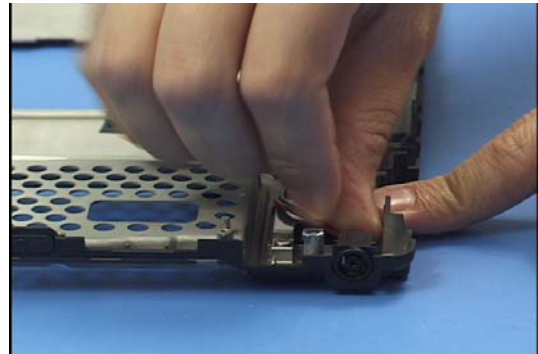
45. Lift it out, and disconnect the RJ45 connector's cable from it.



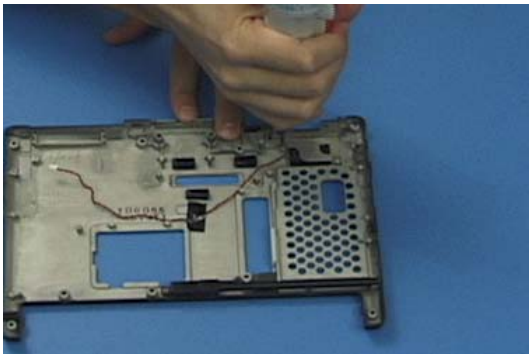
46. Lift out the RJ45 connector.



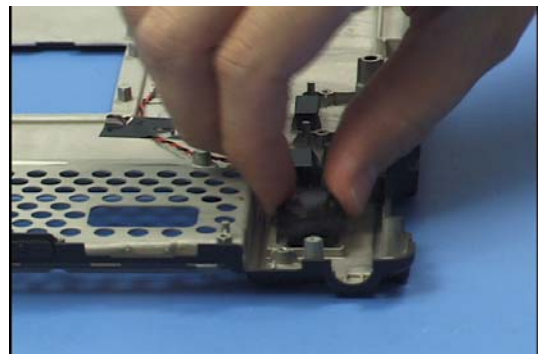
47. Lift out the RJ11 connector.



48. Lift out the external DC connector.



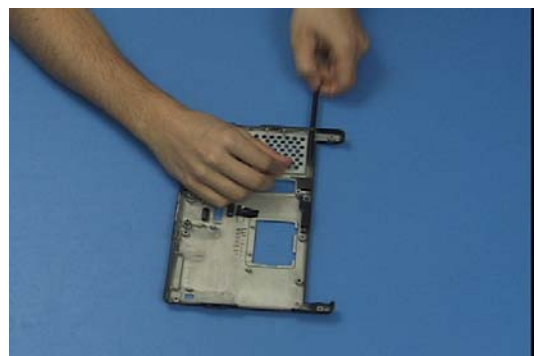
49. Extract 2 screws securing the speaker bracket.



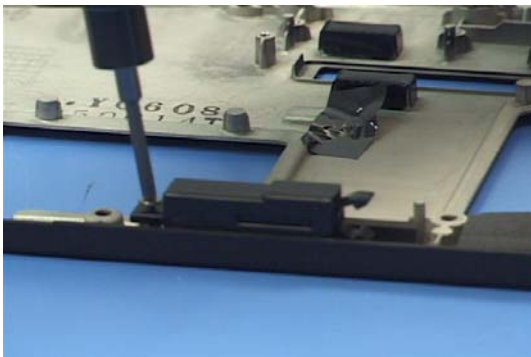
50. Lift out the speaker bracket and speaker.



51. Extract 1 screw from the grounding strip and lift it out.



52. Remove the stylus.



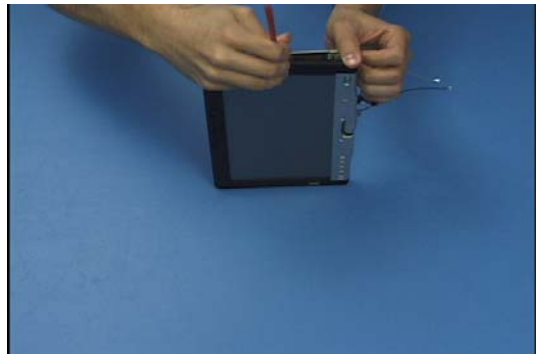
53. Extract 1 screw from the stylus holder and lift it out.



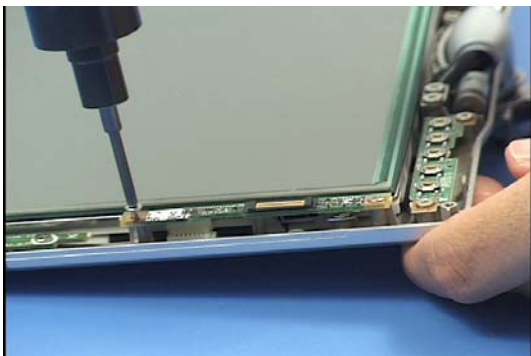
54. Remove 8 screw covers from the front of the display.



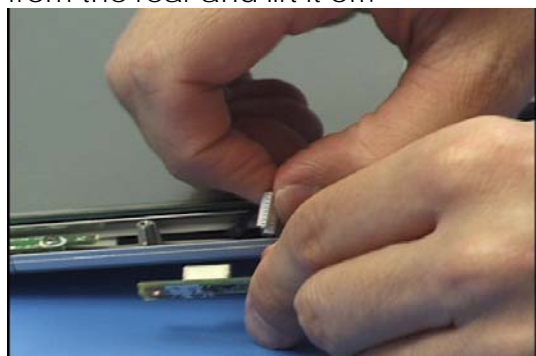
55. Extract the 8 screws underneath.



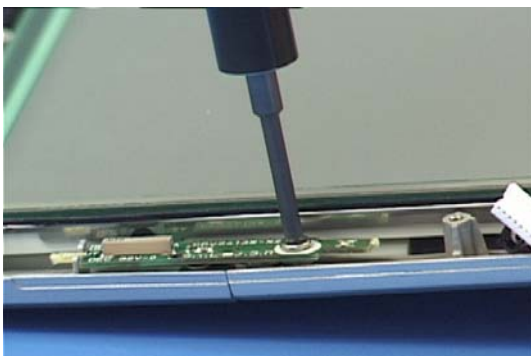
56. Pry around the perimeter of the display to release the front cover from the rear and lift it off.



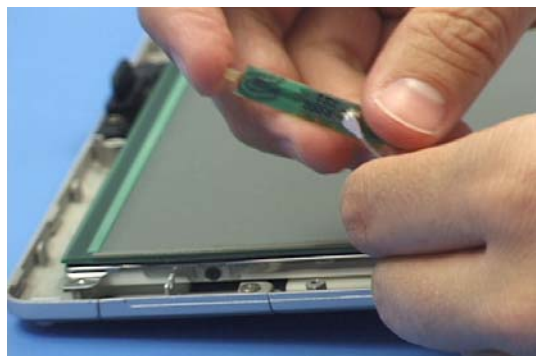
57. Extract 2 screws from the fingerprint scanner PCB.



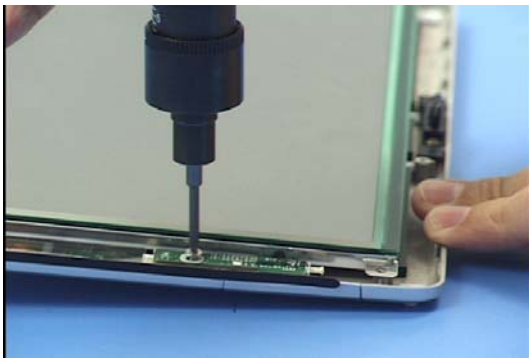
58. Lift it out and disconnect its cable.



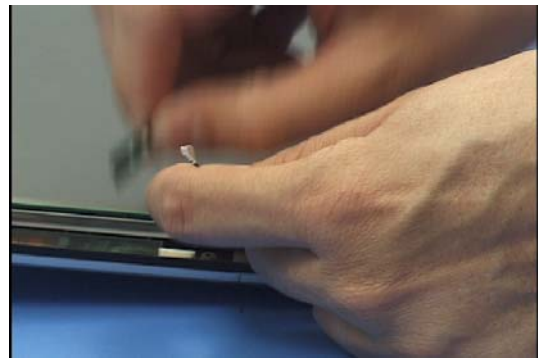
59. Extract 1 screw from the left antenna.



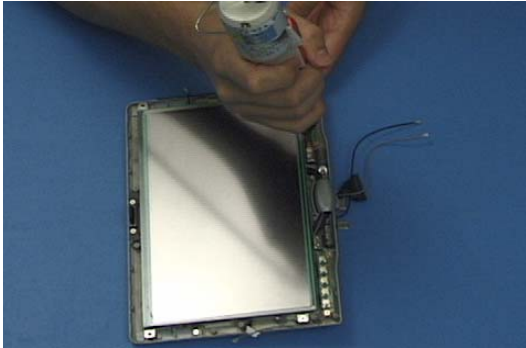
60. Disconnect its cable and remove it.



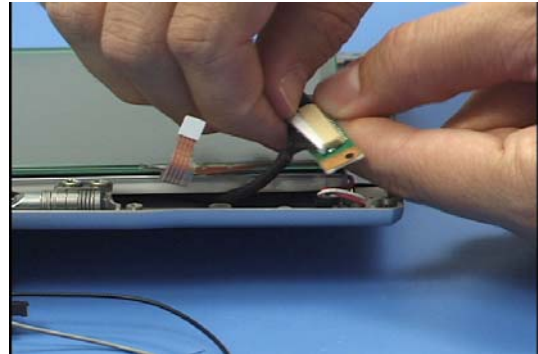
61. Extract 1 screw from the right antenna.



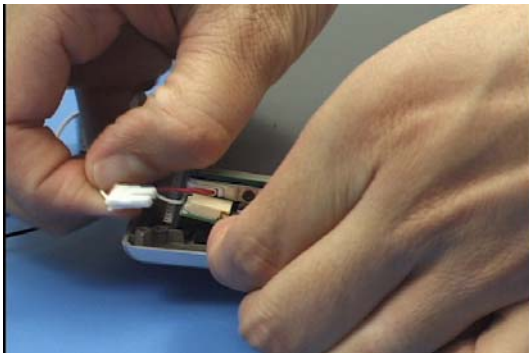
62. Disconnect its cable and remove it.



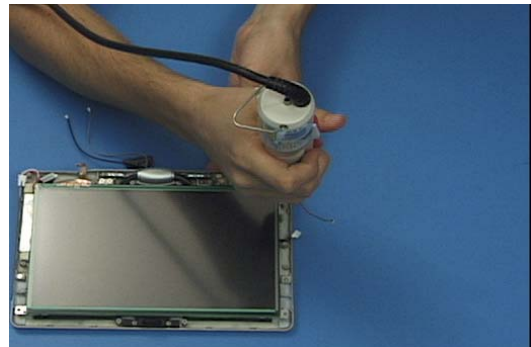
63. Extract 2 screws from the suspend switch PCB.



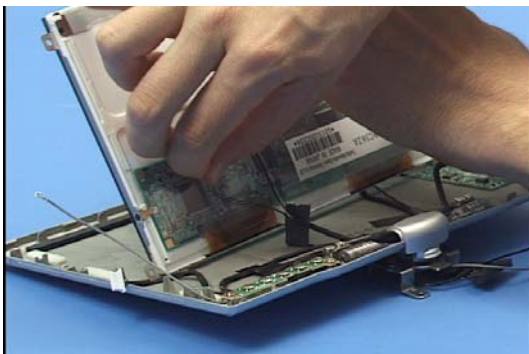
64. Disconnect its cables and remove it.



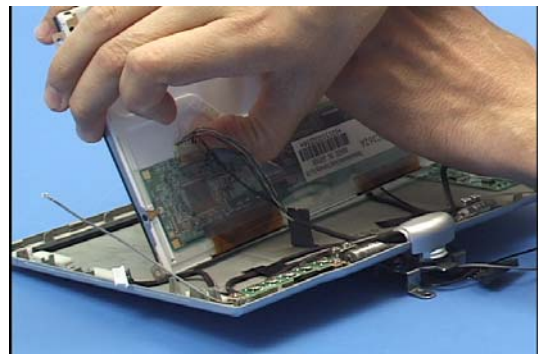
65. Disconnect the backlight cable from the inverter.



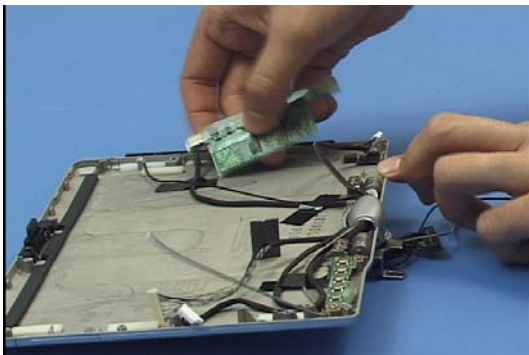
66. Extract 1 screw from the corner of the LCD and tilt it up.



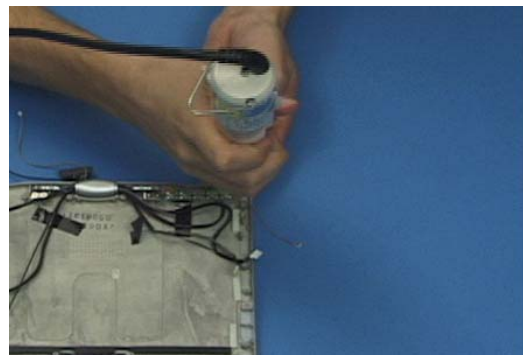
67. Remove the tape from its cable.



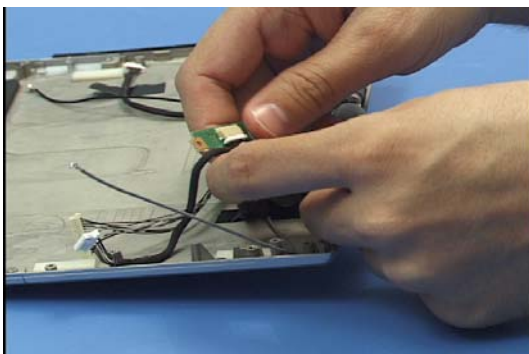
68. Disconnect the cable and lift out the LCD.



69. Lift out the inverter and disconnect its power cable.



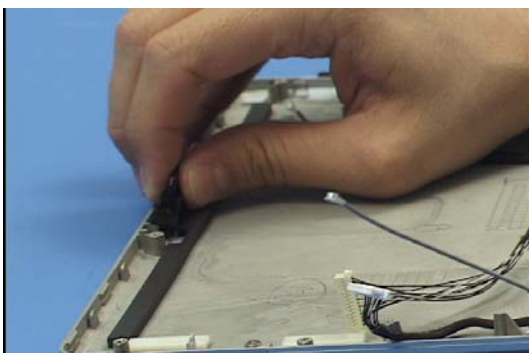
70. Extract 2 screws from the application panel PCB.



71. Disconnect its cable and remove it.



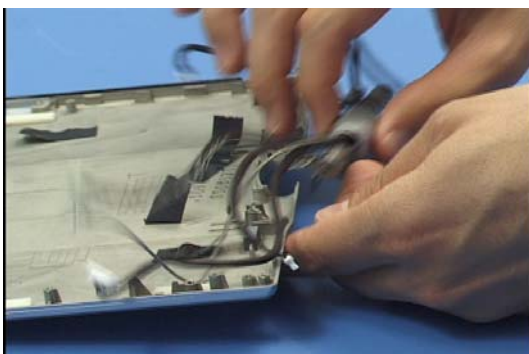
72. Extract 2 screws from the display latch.



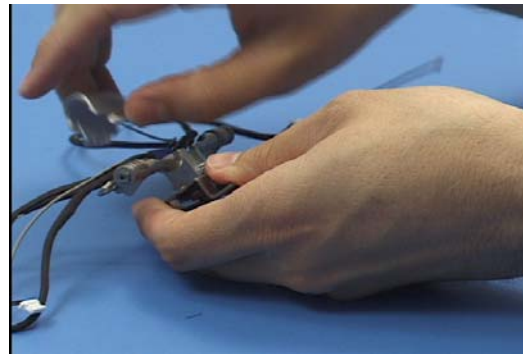
73. Remove the latch.



74. Extract 4 screws from the hinge.



75. Lift the hinge assembly out.



76. Lift the hinge cover off of the hinge assembly.