

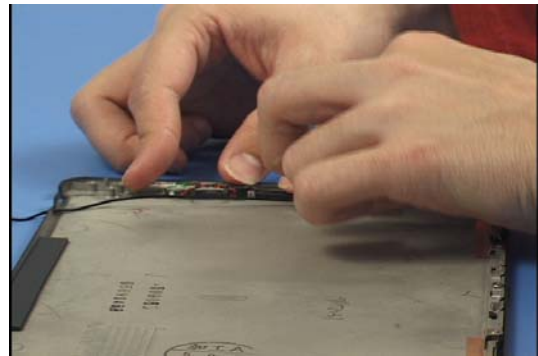
T e c h n i c a l   P r o c e d u r e

# LifeBook P7120D Assembly

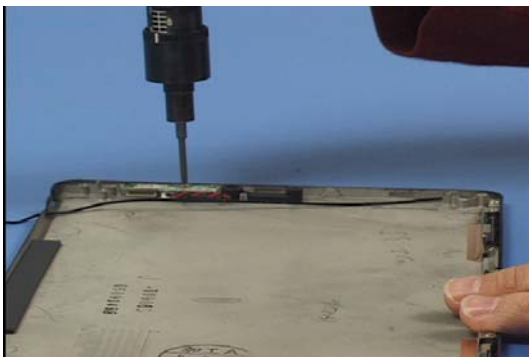
ESD Precautions are required when working on this LifeBook computer.



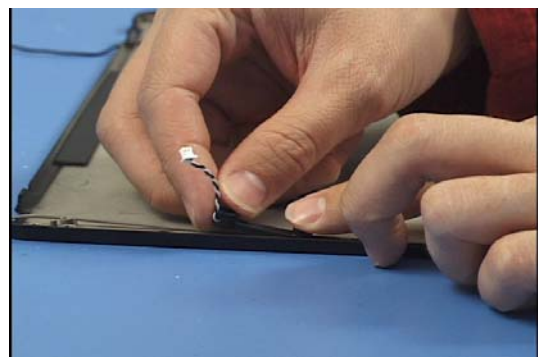
1. Connect the left microphone cable to the microphone PCB.



2. Insert them both into the rear cover of the display.



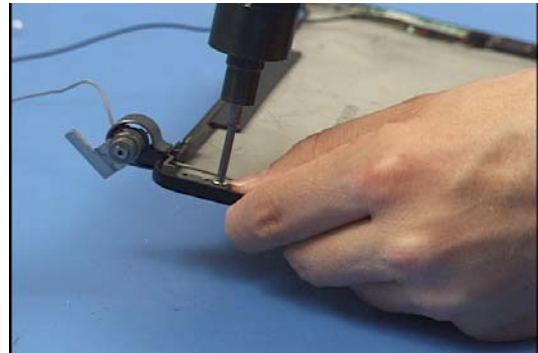
3. Secure the PCB with 1 screw.



4. Insert the right microphone into the cover.



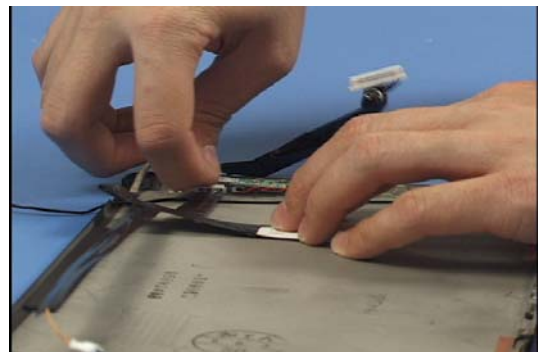
5. Route the right antenna cable through the hinge.



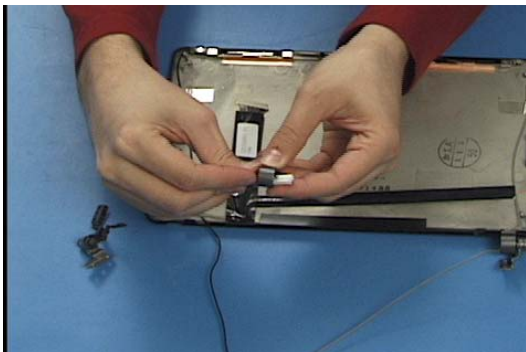
6. Insert the hinge into the cover and secure it with 1 screw.



7. Connect the cable bundle to the right microphone.



8. Connect the cable bundle to the microphone PCB.



9. Route the cable bundle and the left antenna cable through the plastic cover of the left hinge.



10. Place the cover onto the hinge and secure it with 1 screw.



11. Place the hinge into the rear cover and secure it with 1 screw.



12. Stand the LCD into the rear cover and connect its cable.



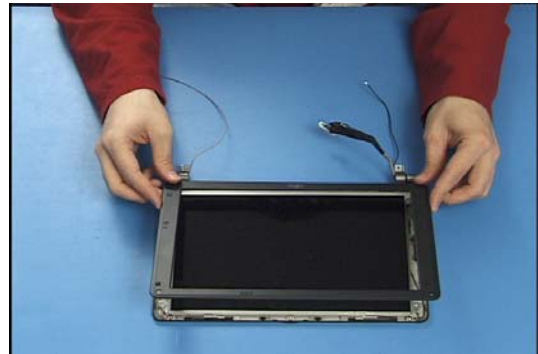
13. Cover the connection with tape.



14. Lay the LCD into the rear cover.



15. Secure the LCD with 4 screws.



16. Place the front cover onto the display.



17. Press firmly around the perimeter to snap it into place.



18. Insert 4 screws into the front of the display.

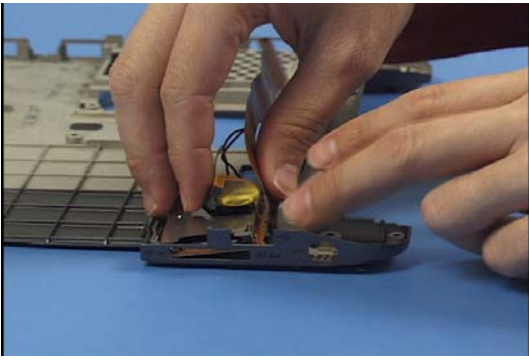


19. Insert 2 screws into the base of the display.

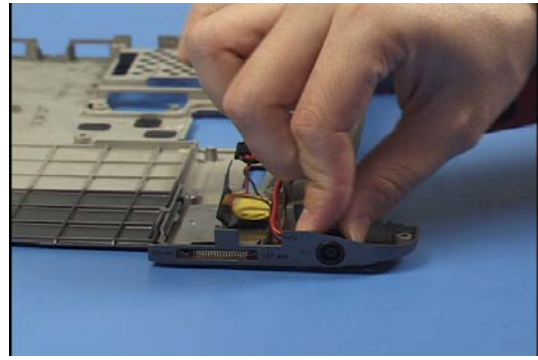


20. Place screw covers over the 4 screws in the front of the display.

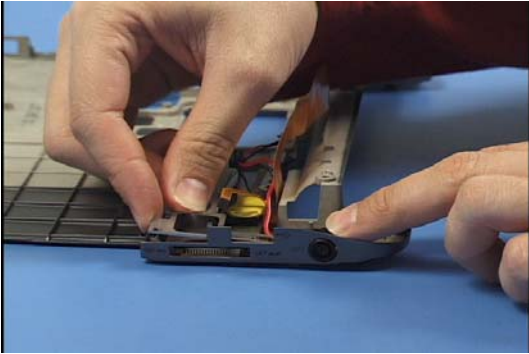




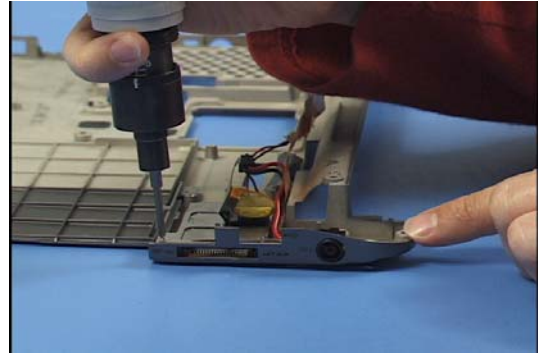
21. Place the SD card PCB into the lower case.



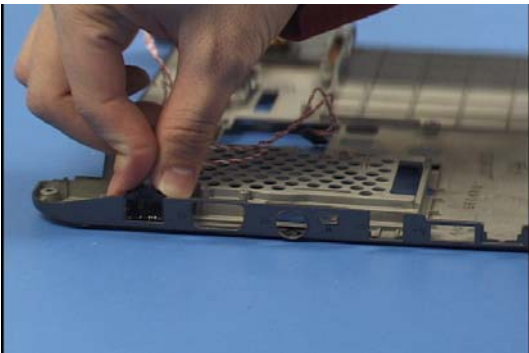
22. Insert the DC connector.



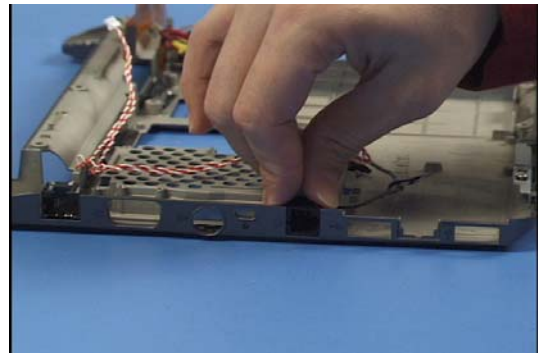
23. Place the SD and DC bracket over them.



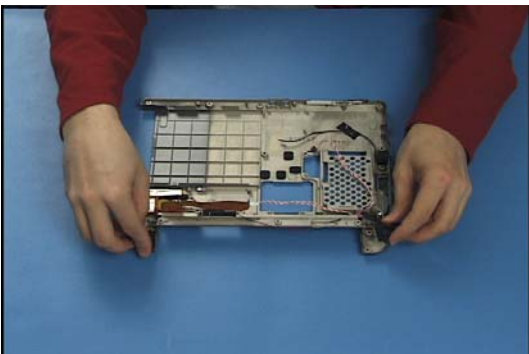
24. Secure the bracket with 1 screw.



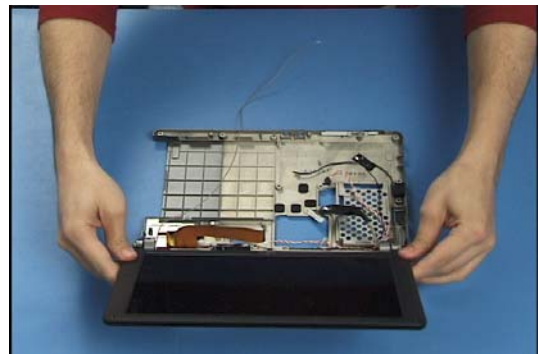
25. Insert the RJ45 connector.



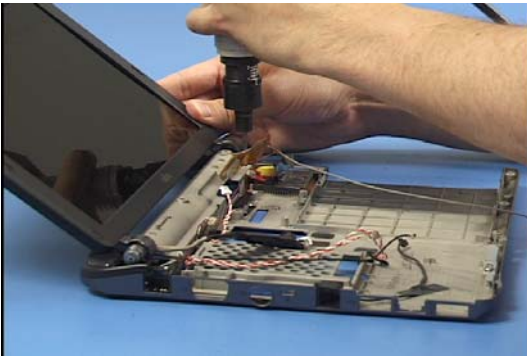
26. Insert the RJ11 connector.



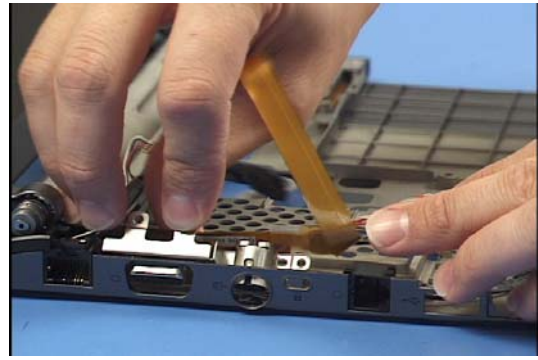
27. Insert the 2 speakers and speaker covers into the lower case.



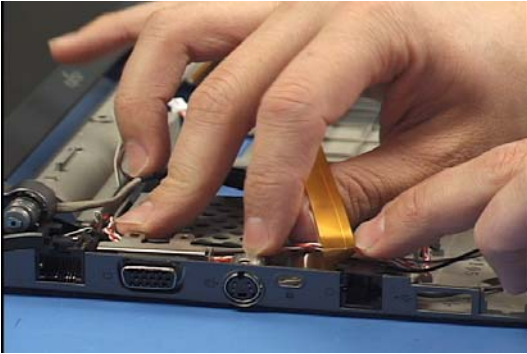
28. Place the display onto the lower case.



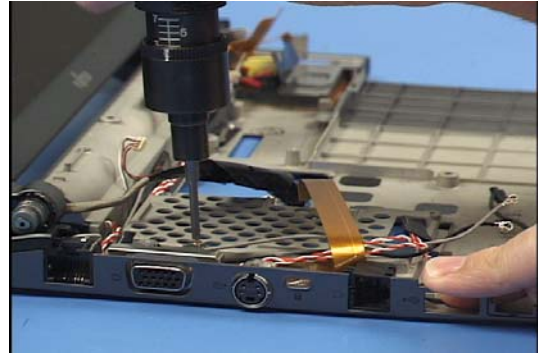
29. Secure it with 1 screw in each of the 2 hinges.



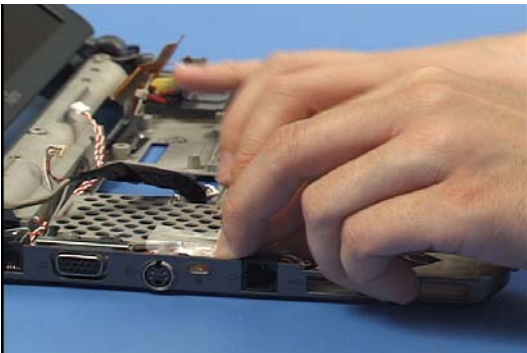
30. Insert the video bracket into the lower case.



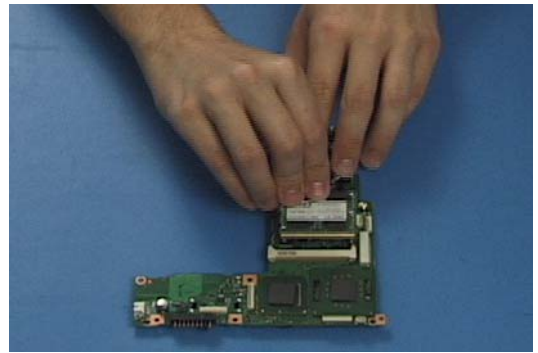
31. Route the cables under the bracket.



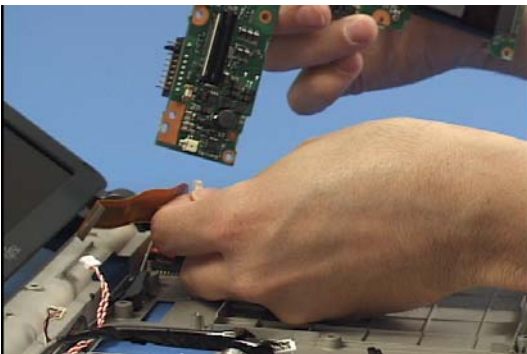
32. Secure the bracket with 3 screws.



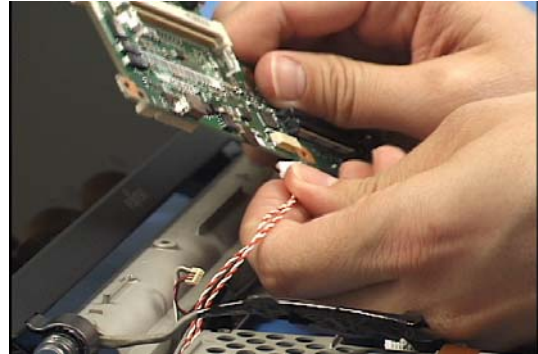
33. Secure the cable with the adhesive cable guide.



34. Insert the factory installed RAM into the slot on the system board.

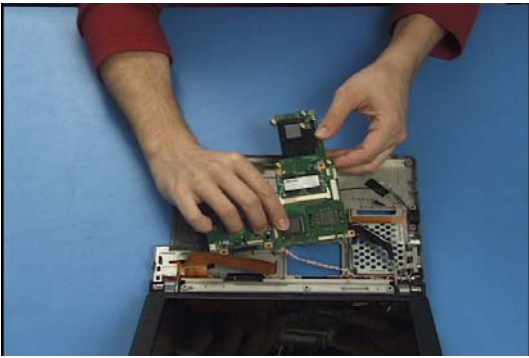


35. Connect the CMOS battery cable to the system board.

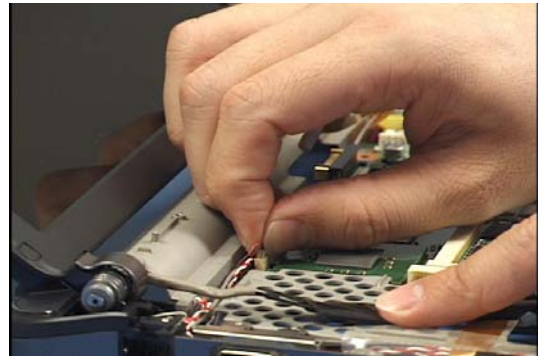


36. Connect the LAN cable to the system board.

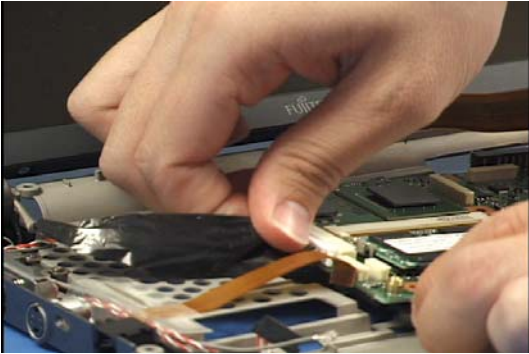




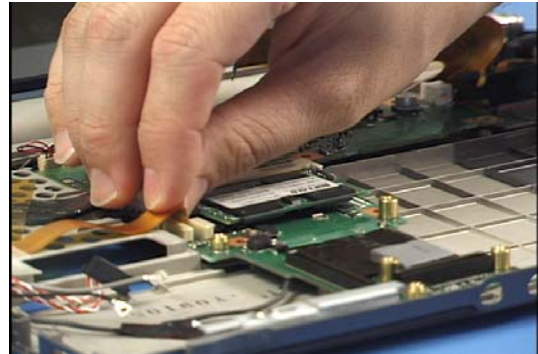
37. Lower the system board into place.



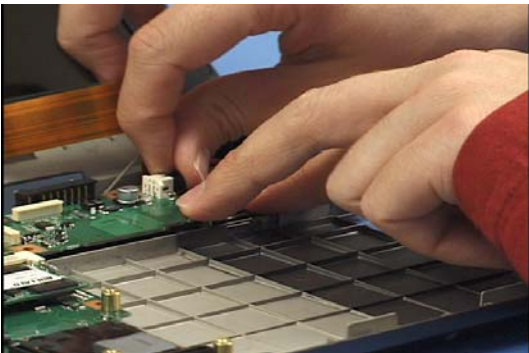
38. Connect the speaker cable to the system board.



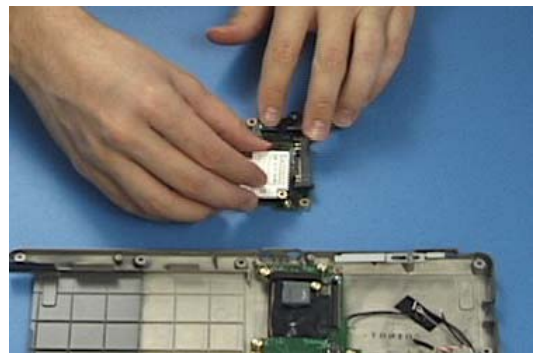
39. Connect the display cable to the system board and tape it down.



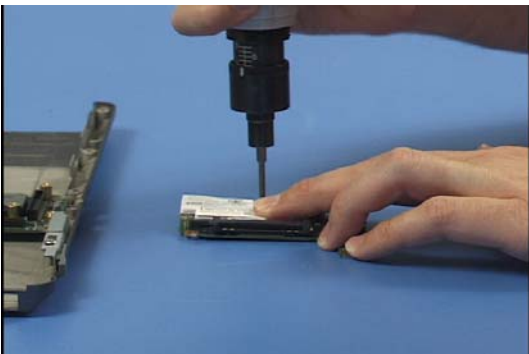
40. Connect the external video ribbon cable to the system board.



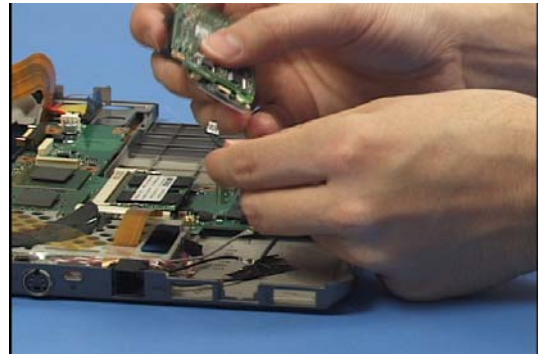
41. Connect the DC cable to the system board.



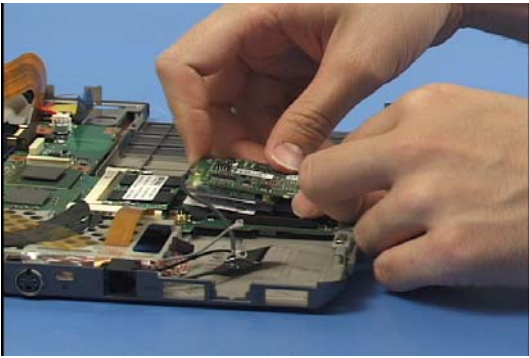
42. Press the modem onto the daughterboard.



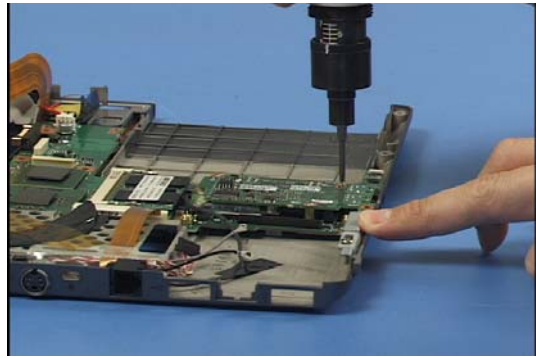
43. Secure it with 2 screws.



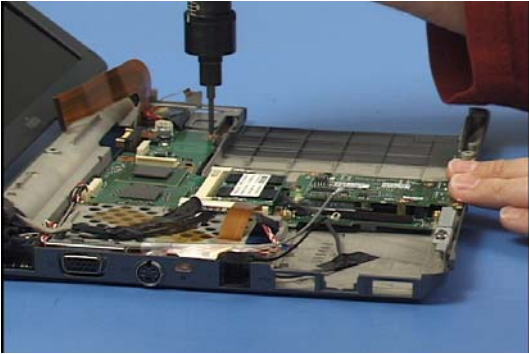
44. Connect the RJ11 connector's cable to the modem.



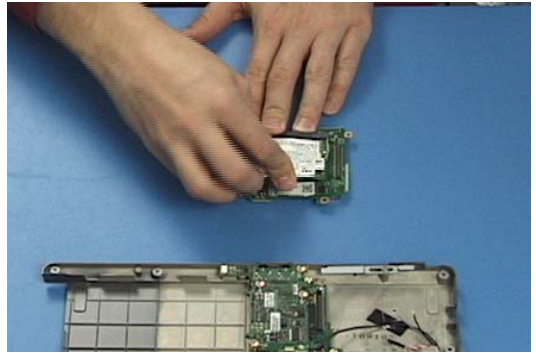
45. Press the daughterboard onto the system board.



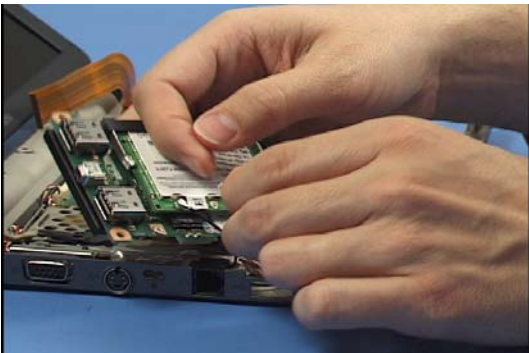
46. Secure the daughterboard with 4 screws.



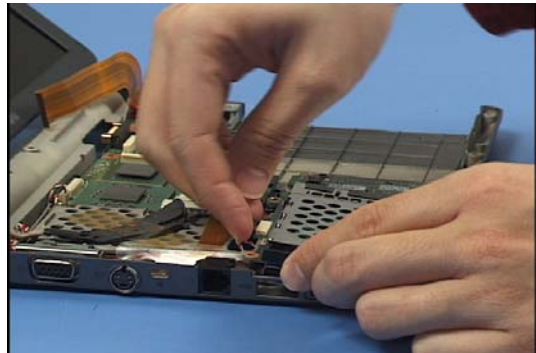
47. Secure the system board with 2 screws.



48. Place the WLAN card into its slot on the bottom of the PC Card PCB.



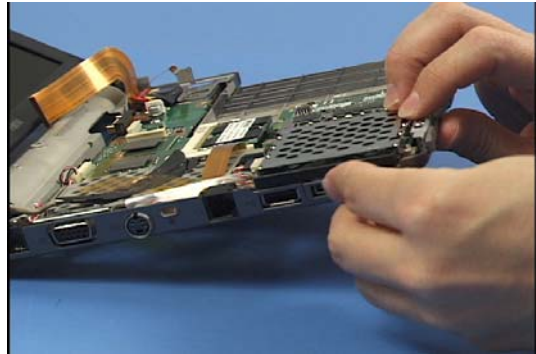
49. Connect the 2 antenna cables to the WLAN Card.



50. Connect the LAN cable and press the PCB into place on the system board.

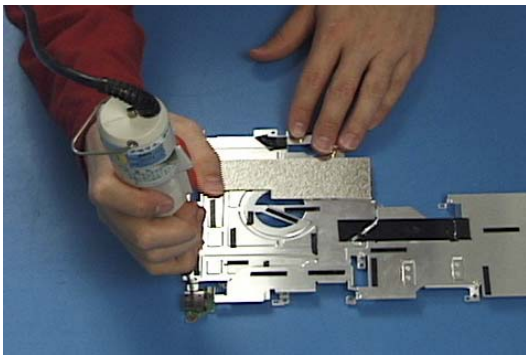


51. Secure it with 2 screws.



52. Place the plastic trim around the IEEE 1394 connector.

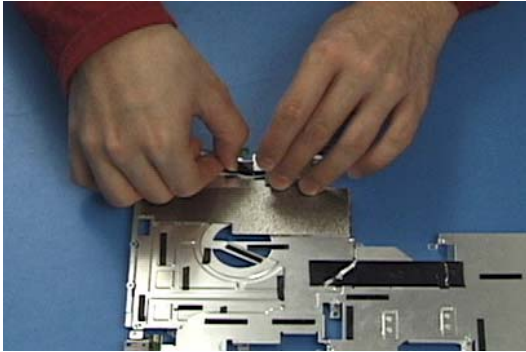




53. Secure the right side USB connector to the metal shield with 1 screw.



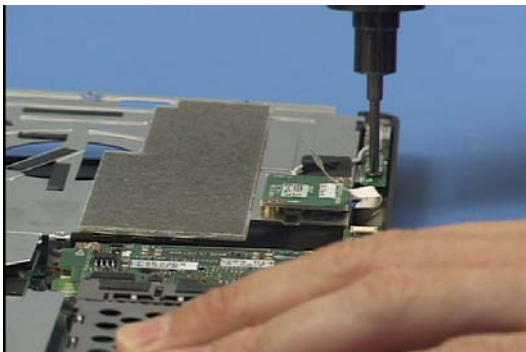
54. Secure the Bluetooth PCB to the shield with 2 screws.



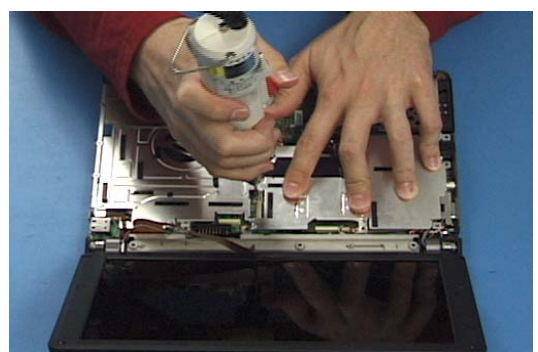
55. Tape down its cable.



56. Place the metal shield over the system board.



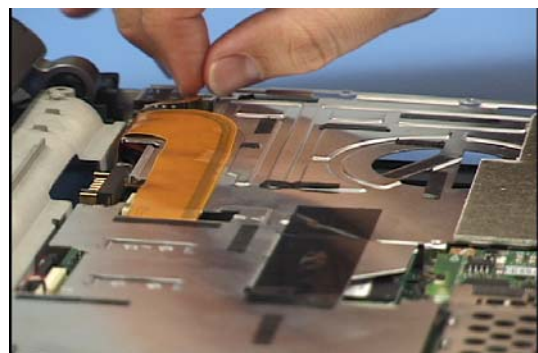
57. Insert 1 screw into the Bluetooth antenna board.



58. Insert 1 screw into the metal shield.

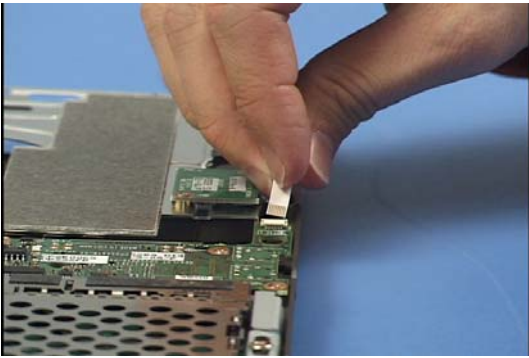


59. Connect the SD slot ribbon cable to the system board.

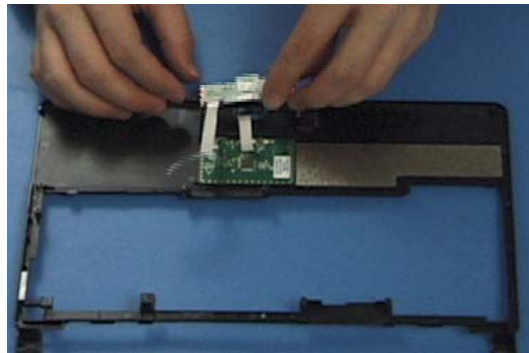


60. Connect the right side USB connector cable to the system board.

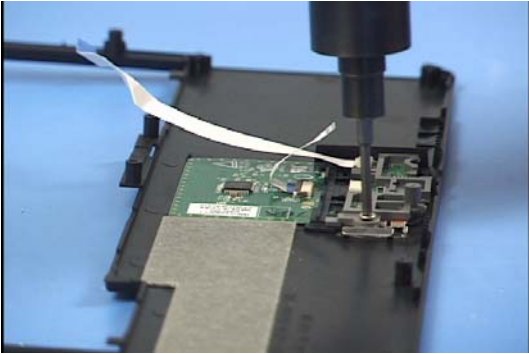




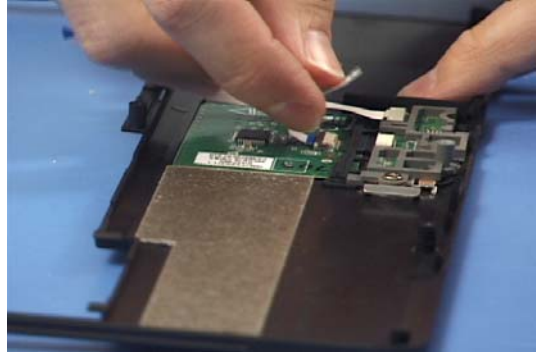
61. Connect the Bluetooth cable to the system board.



62. Insert the GlidePoint button PCB into the upper case.



63. Place the plastic bracket over it and secure it with 1 screw.



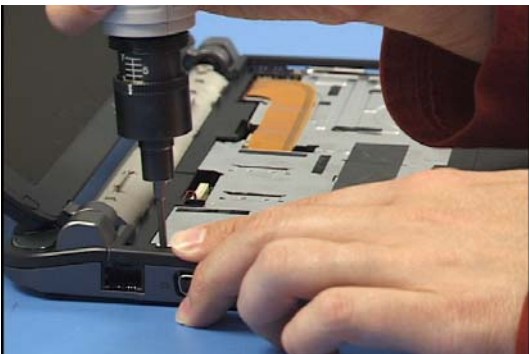
64. Connect the ribbon cable from the sensor to the button PCB.



65. Place the upper case onto the lower.



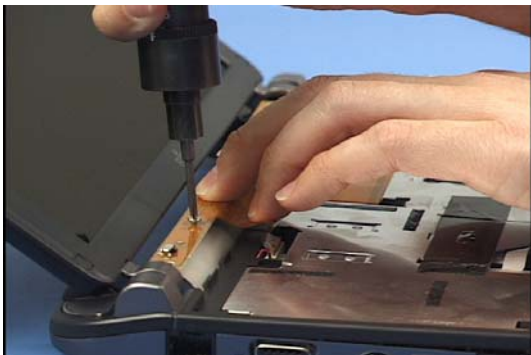
66. Connect the GlidePoint cable to the system board.



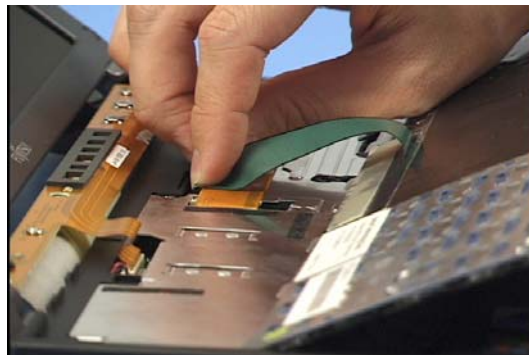
67. Secure the upper cover with 2 screws.



68. Connect the status panel ribbon cable to the system board.



69. Secure the panel PCB with 2 screws.



70. Connect the keyboard cable to the system board.



71. Turn the keyboard over and slide it into place.



72. Press the status panel cover into place.



73. Turn the LifeBook over and insert 23 lower case screws.



74. Connect the Hard Disk Drive cable.



75. Insert the drive into the case.



76. Place the drive cover over it.

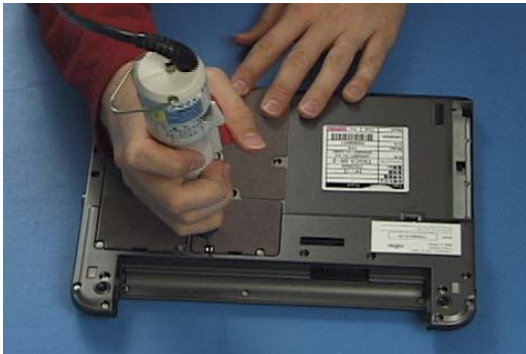




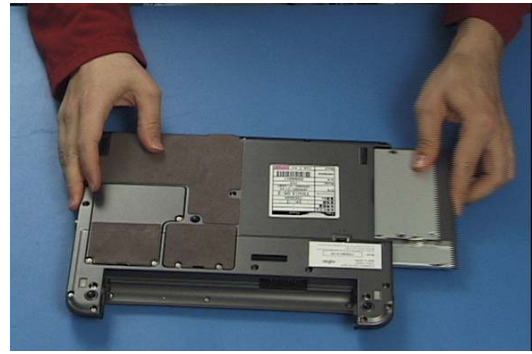
77. Secure the cover with 3 screws.



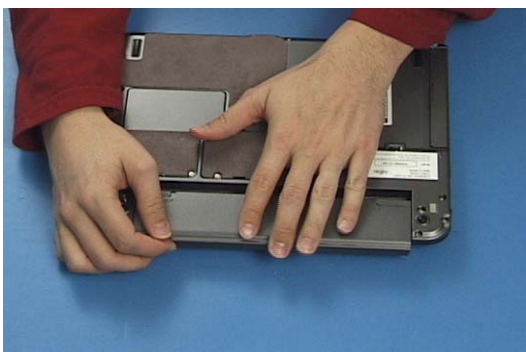
78. Insert the upgradeable RAM compartment cover.



79. Secure it with 2 screws.



80. Slide the optical drive into its bay.



81. Insert the battery.