

T e c h n i c a l   P r o c e d u r e

# LifeBook P7120D

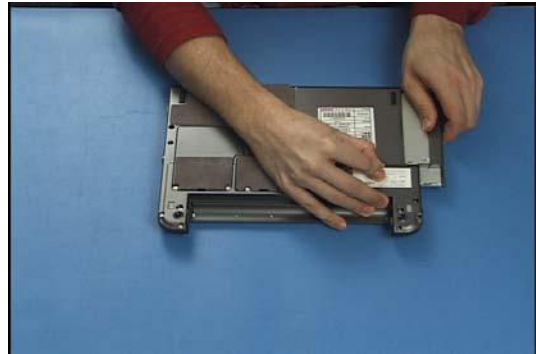
## Disassembly

ESD Precautions are required when working on this LifeBook computer.

Make sure the LifeBook is turned off before beginning this disassembly procedure.



1. Turn the LifeBook over and remove the battery.



2. Slide out the Optical Drive.



3. Extract 2 screws securing the upgradeable RAM compartment cover.



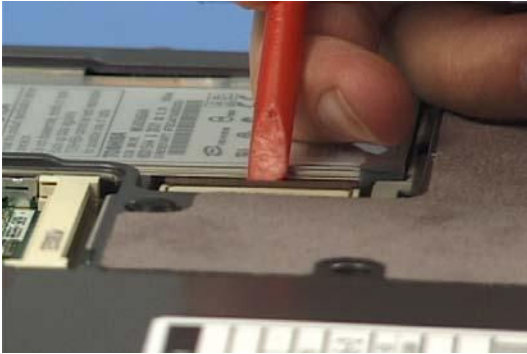
4. Lift the cover off and remove RAM if present.



5. Extract 3 screws from the Hard Disk Drive cover.



6. Lift off the cover.



7. Disconnect the Drive cable.



8. Lift the drive out.



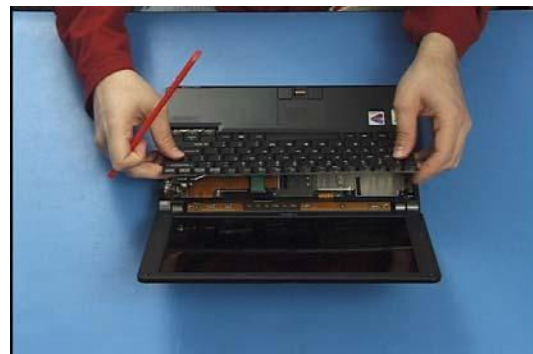
9. Extract 23 lower case screws.



10. Turn the LifeBook over and open the cover.

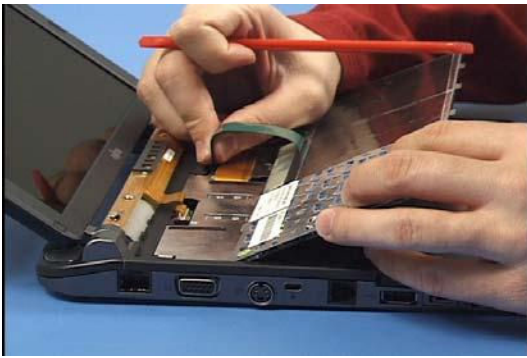


11. Use a plastic screwdriver to pry up the status panel cover and lift it out.

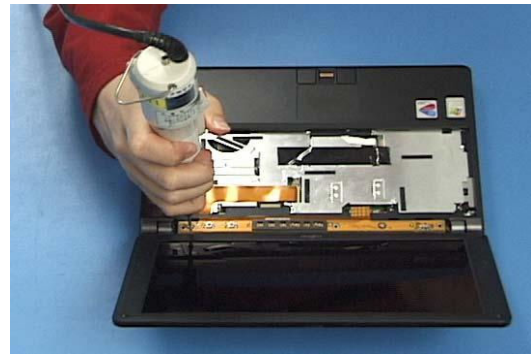


12. Tilt the keyboard up.

"The keyboard was taped down with several small pieces of black double-sided tape (affixed at various points between the underside of the keyboard and the metal shield beneath). So the keyboard doesn't tilt up without being very gently pried & jimmied up off the tape bits." -Kyo L.



13. Disconnect its cable and lift it out.



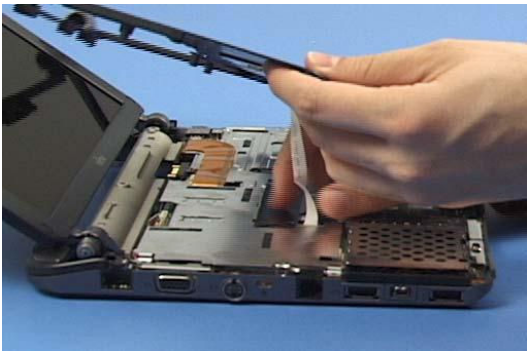
14. Extract 2 screws from the status panel PCB.



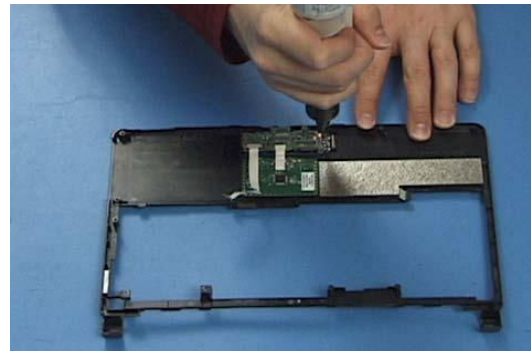
15. Disconnect its cable and lift it out.



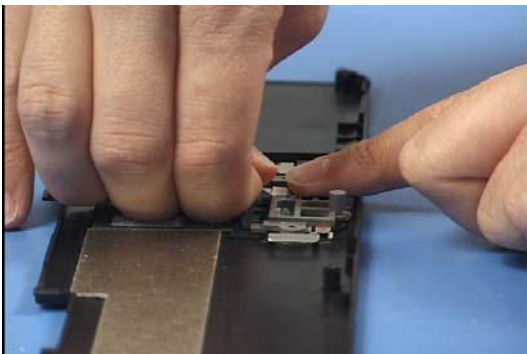
16. Extract 2 screws from the upper cover and lift it up.



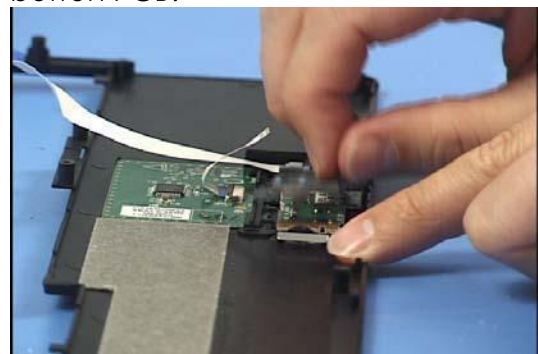
17. Disconnect the TouchPoint cable.



18. Turn the upper cover over and extract one screw from the plastic bracket covering the TouchPoint button PCB.

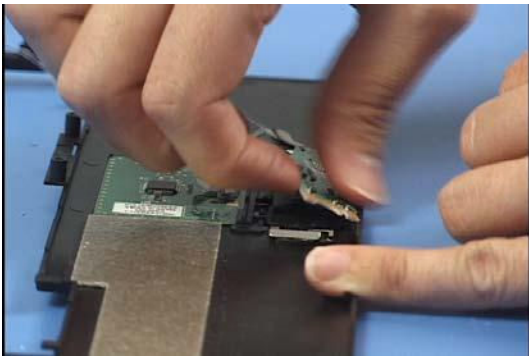


19. Disconnect the ribbon cable between the sensor and button PCB.

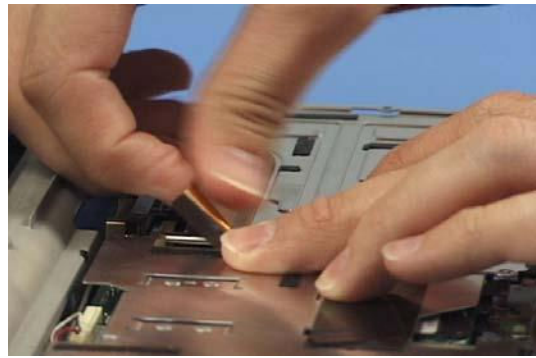


20. Lift off the bracket.

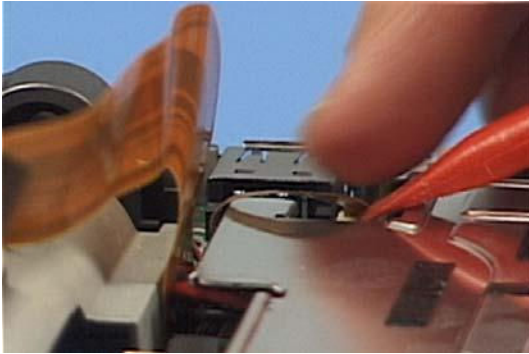




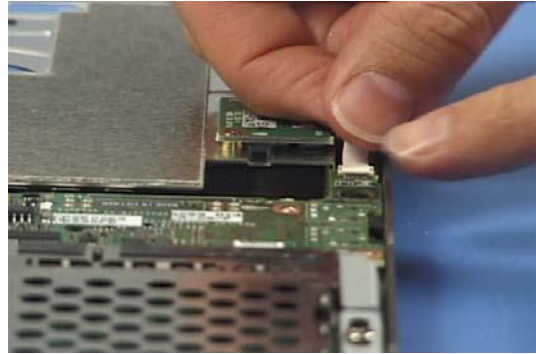
21. Lift out the button PCB.



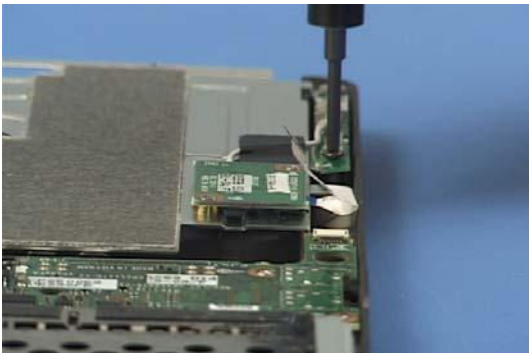
22. Disconnect the SD card slot ribbon cable from the system board.



23. Disconnect the right side USB connector ribbon cable from the system board.



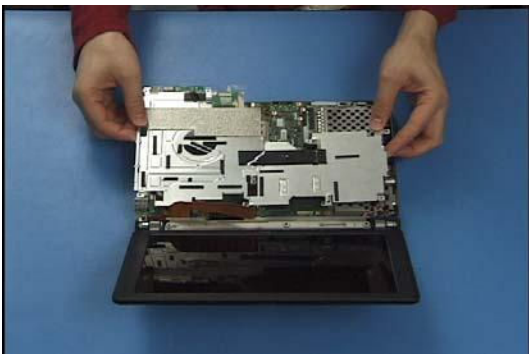
24. Disconnect the Bluetooth ribbon cable from the daughterboard.



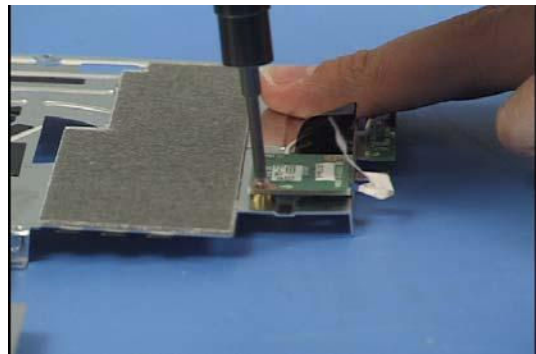
25. Extract 1 screw from the Bluetooth antenna.



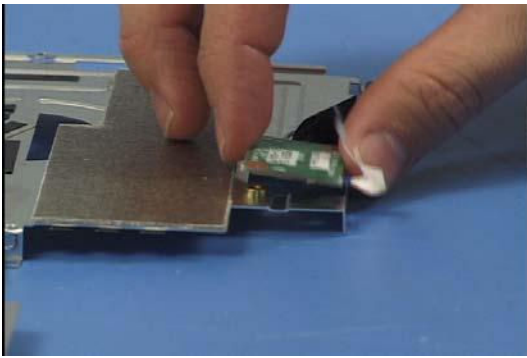
26. Extract 1 screw from the metal shield.



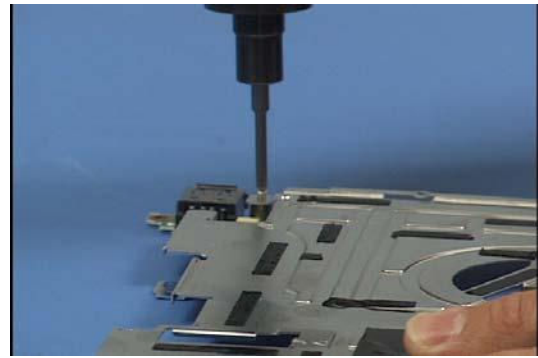
27. Lift the shield out.



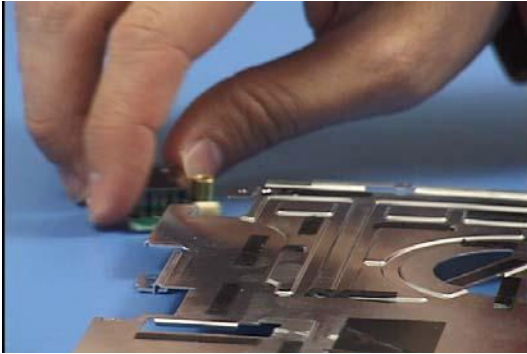
28. Extract 2 screws from the Bluetooth board.



29. Lift it off the shield.



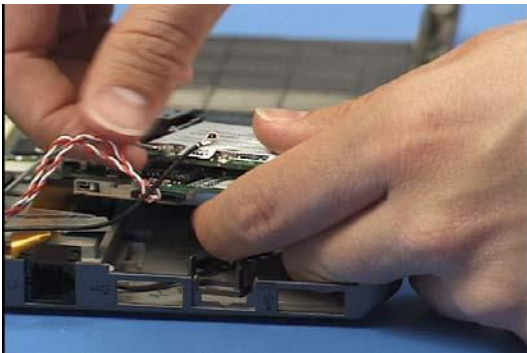
30. Extract 1 screw from the right side USB connector.



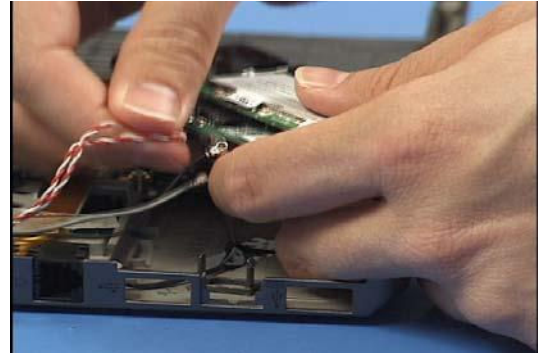
31. Remove it from the shield.



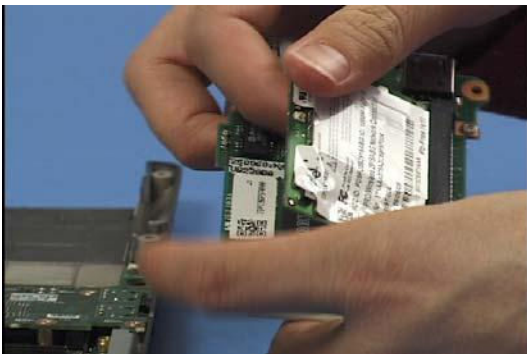
32. Extract 2 screws from the PC Card PCB.



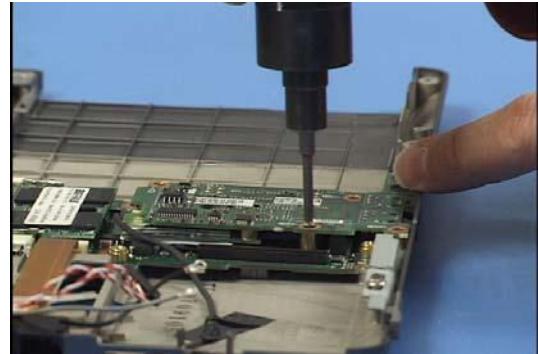
33. Lift it out and turn it over and disconnect the 2 antenna cables from the WLAN card.



34. Disconnect the LAN cable.

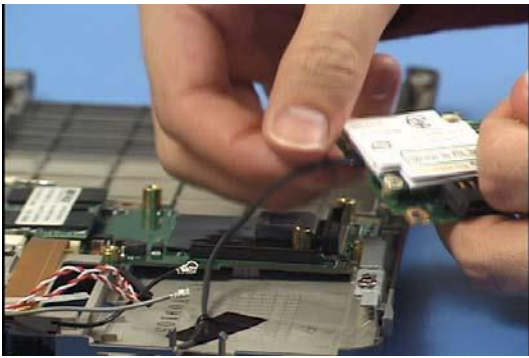


35. Press out on the locking clips to release the WLAN card and remove it.

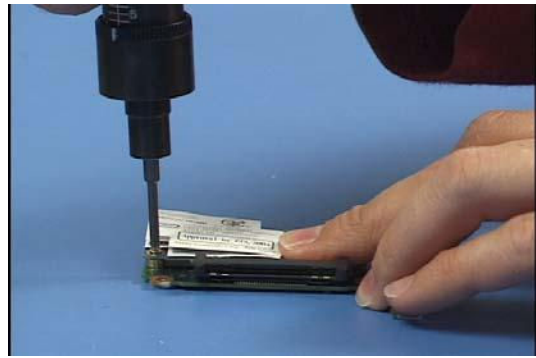


36. Extract 4 screws from the daughterboard.

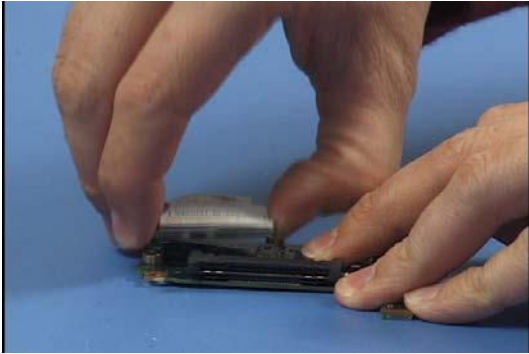




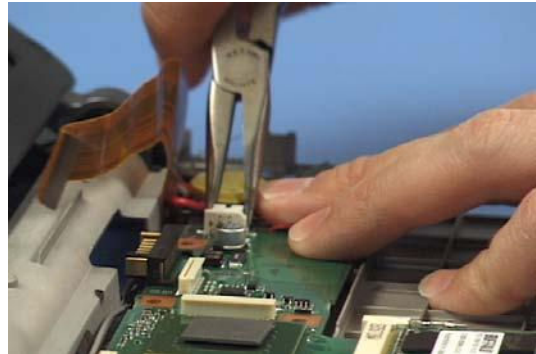
37. Lift it out, turn it over and disconnect the RJ11 connector's cable from the modem.



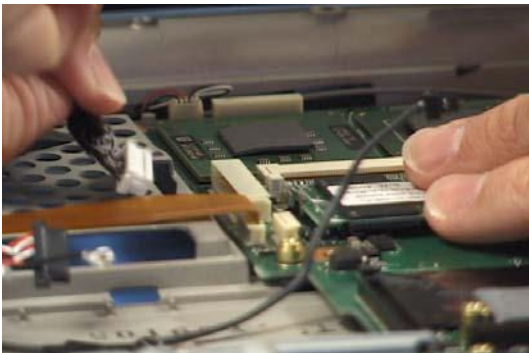
38. Extract 2 screws from the modem.



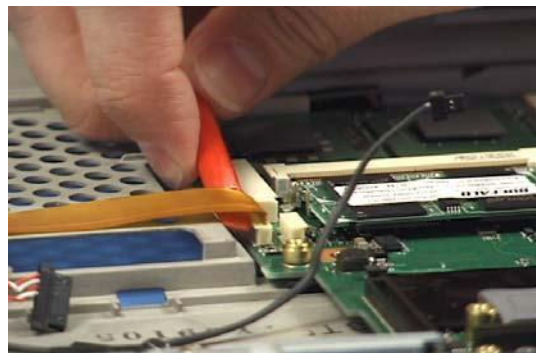
39. Lift it off.



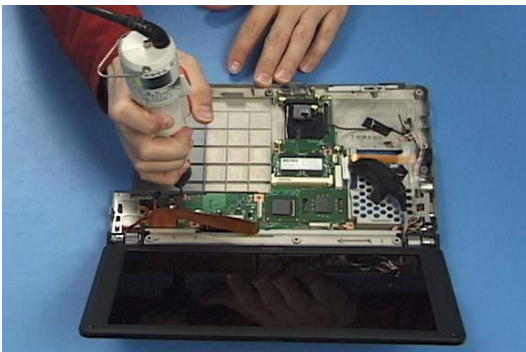
40. Disconnect the DC cable from the system board.



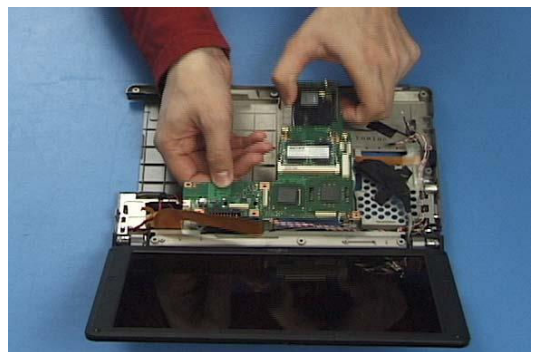
41. Disconnect the display cable from the system board.



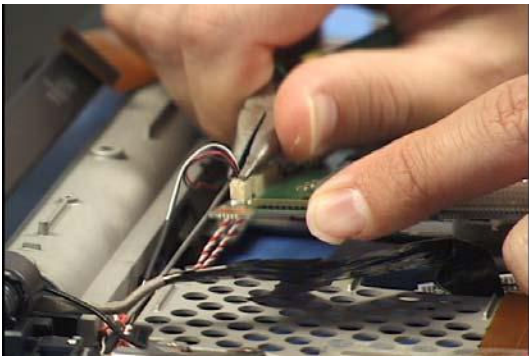
42. Disconnect the external video cable from the system board.



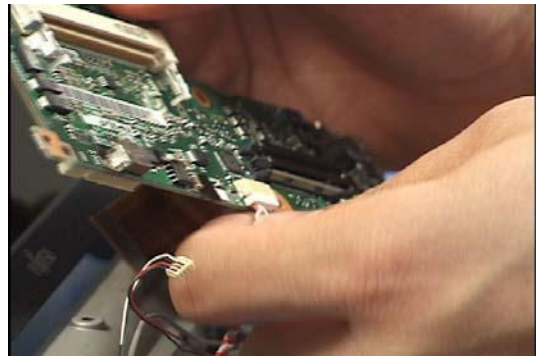
43. Extract 2 screws from the system board.



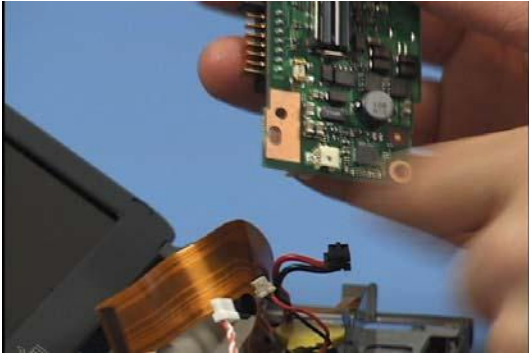
44. Lift it out.



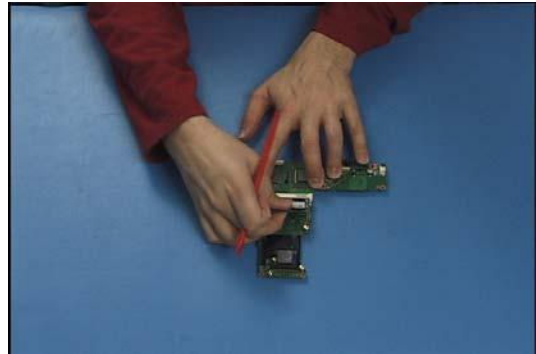
45. Disconnect the speaker cable from the system board.



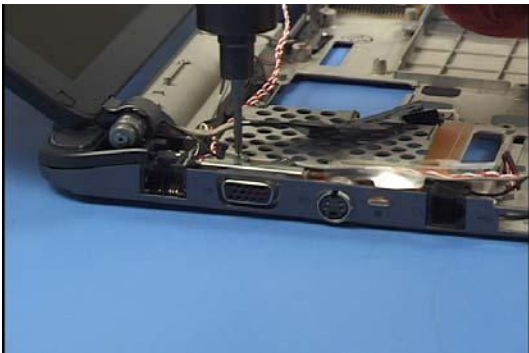
46. Turn the system board over and disconnect the LAN cable.



47. Disconnect the CMOS battery cable.



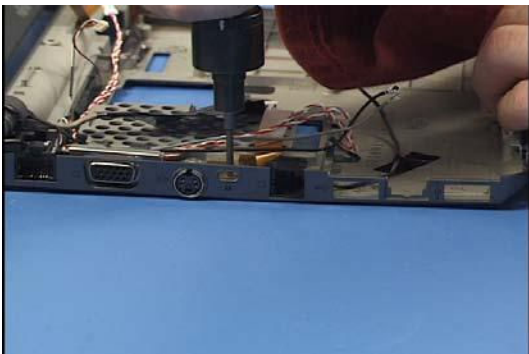
48. Press out on the locking clips to release the factory installed RAM and lift it out.



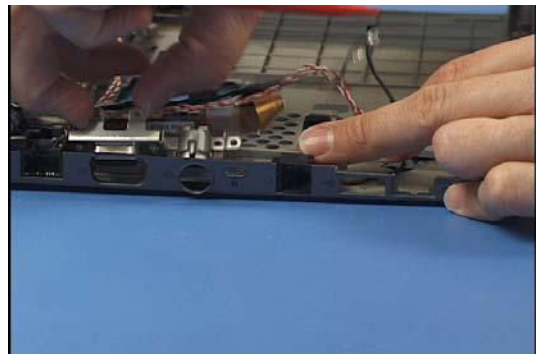
49. Extract 2 screws from the external video connector bracket.



50. Peel off the adhesive cable guide.

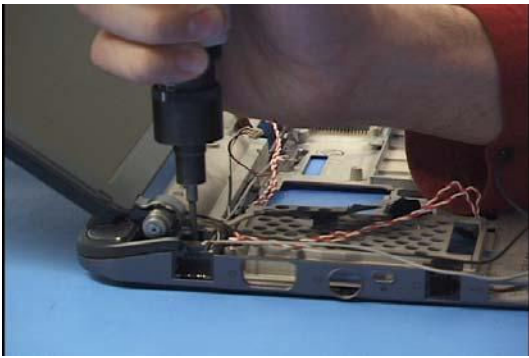


51. Extract 1 more screw from the video bracket.

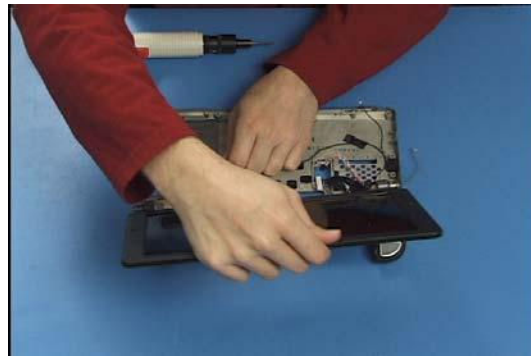


52. Tilt the bracket forward and lift it out.

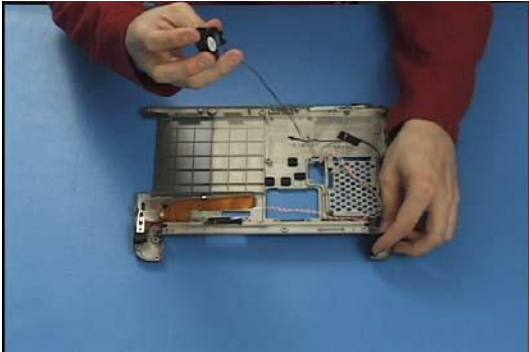




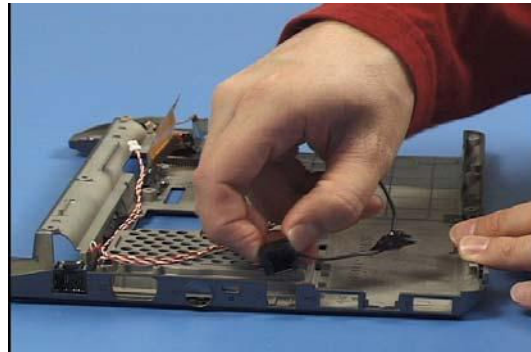
53. Extract 1 screw from each of the 2 hinges.



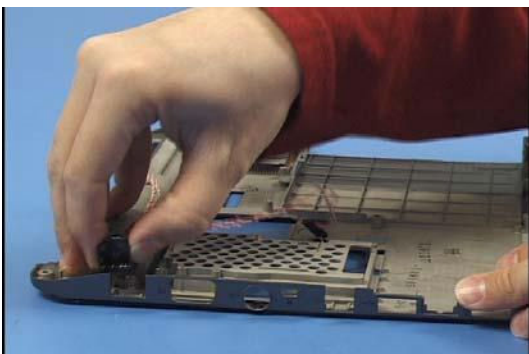
54. Lift the display off.



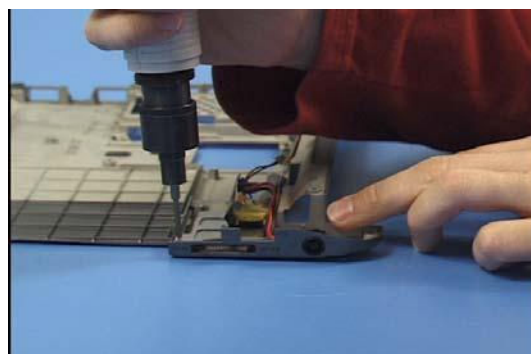
55. Lift out the speaker covers and speakers.



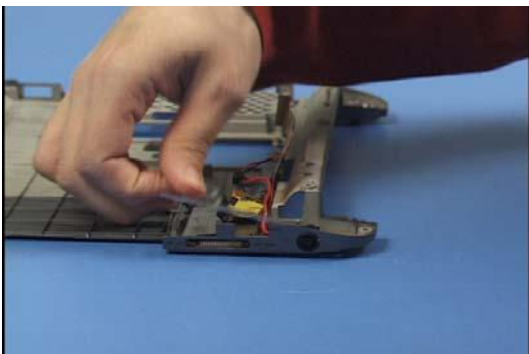
56. Lift out the RJ11 connector.



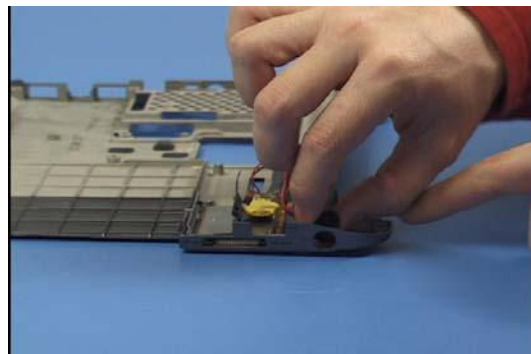
57. Lift out the RJ45 connector.



58. Extract 1 screw from the SD and DC bracket.

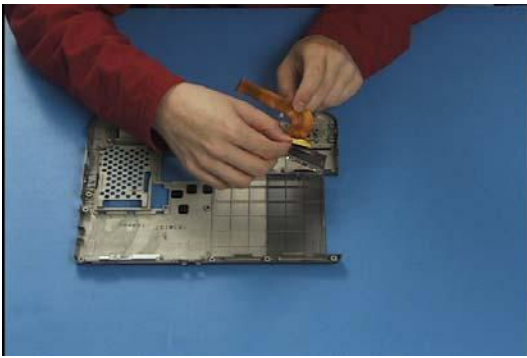


59. Lift the bracket out.

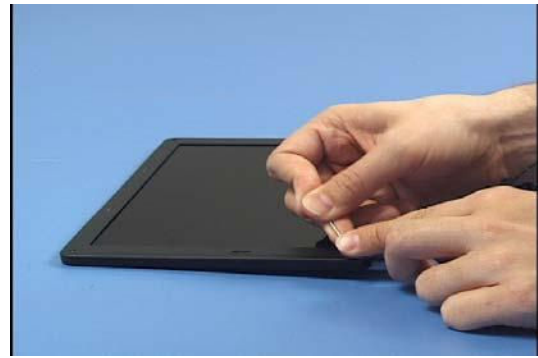


60. Lift out the DC connector.

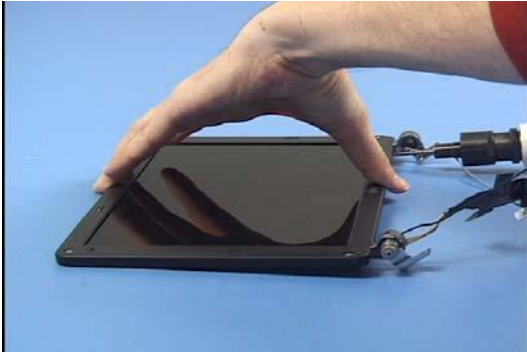




61. Lift out the SD card PCB.



62. Remove 4 screw covers from the front of the display.



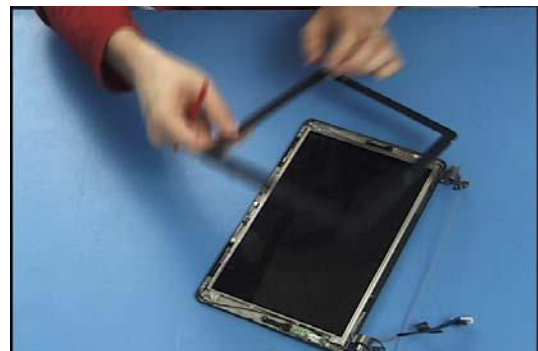
63. Extract 2 screws from the base of the display.



64. Extract 4 screws from the front of the display.



65. Pry around the perimeter of the display with a plastic screwdriver to release the front cover from the rear.



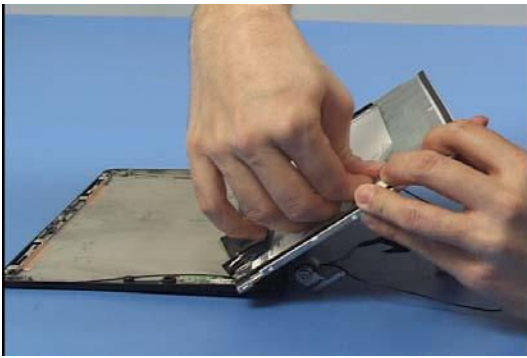
66. Lift the front cover off.



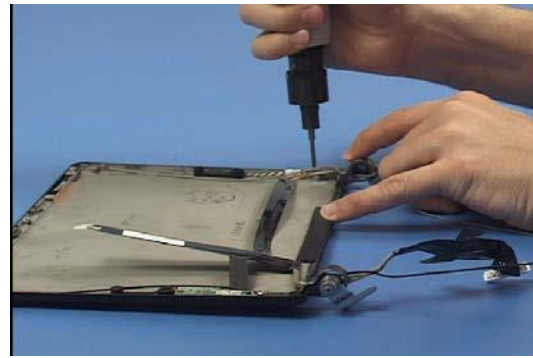
67. Extract 4 screws from the front of the LCD.



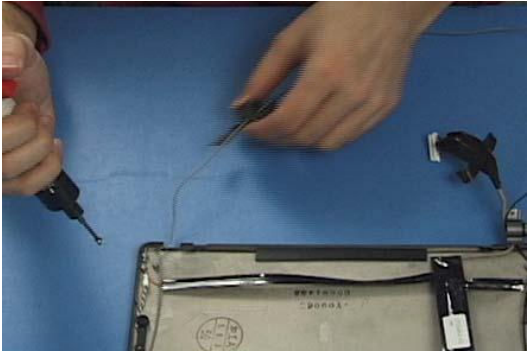
68. Tilt it up and remove the tape from the display cable.



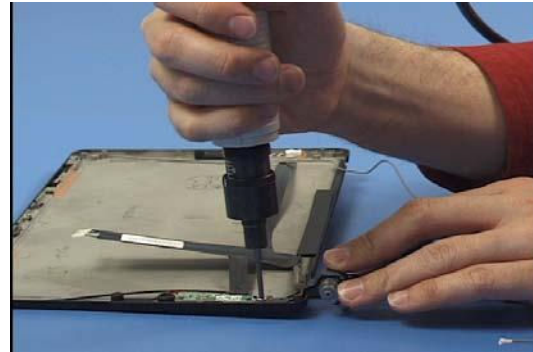
69. Disconnect it and lift the LCD out.



70. Extract 1 screw from the right hinge.



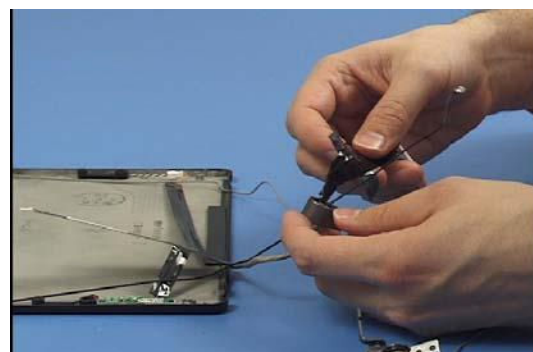
71. Lift it out and carefully slide it off of the antenna cable.



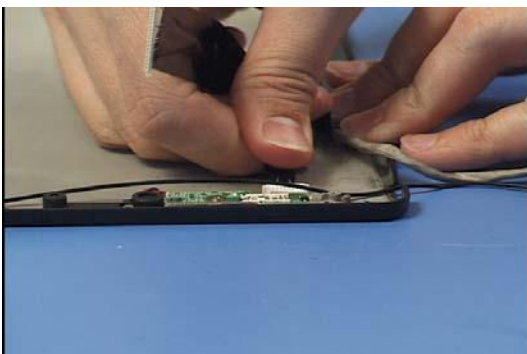
72. Extract 1 screw from the left hinge.



73. Lift it out and extract 1 screw from its plastic cover.



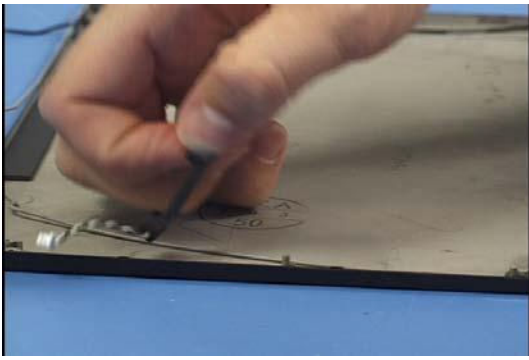
74. Lift the cover off and route the cables out.



75. Disconnect the cable bundle from the microphone PCB.



76. Disconnect the cable bundle from right microphone and set it aside.



77. Lift out the right microphone.



78. Extract 1 screw from the microphone PCB.



79. Lift it and the left microphone out and disconnect the microphone cable from it.