

Technical Procedure

LifeBook P1610 IO Board and Modem Replacement

ESD Precautions are required when working on this LifeBook computer.

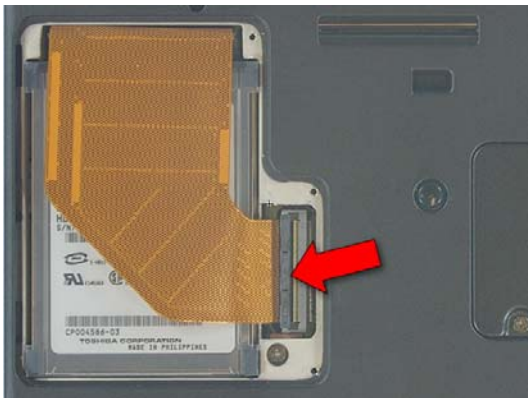
Make sure the LifeBook is turned off before beginning this procedure.



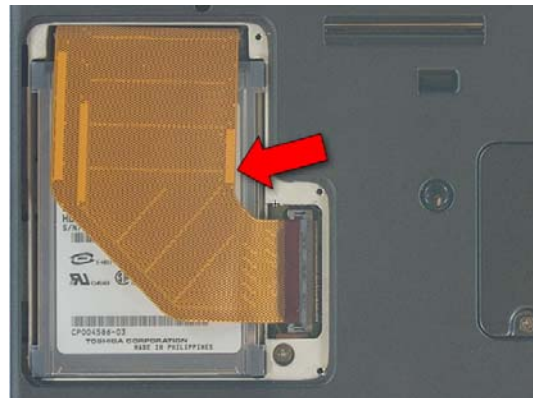
1. Turn the LifeBook over and remove the battery



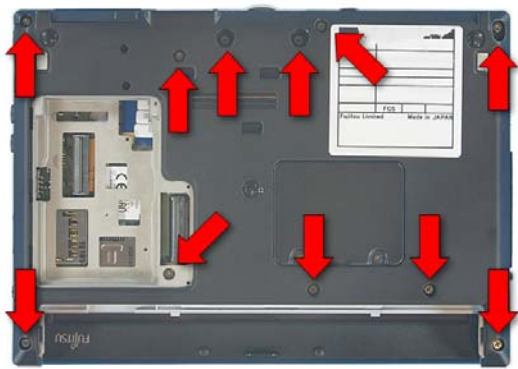
2. Extract these 3 screws from the Hard Disk Drive cover and lift it off.



3. Release the cable by flipping the latch up.



4. Lift the Drive out.



5. Extract 11 screws from the lower case.



6. Extract 2 screws from the rear of the LifeBook.



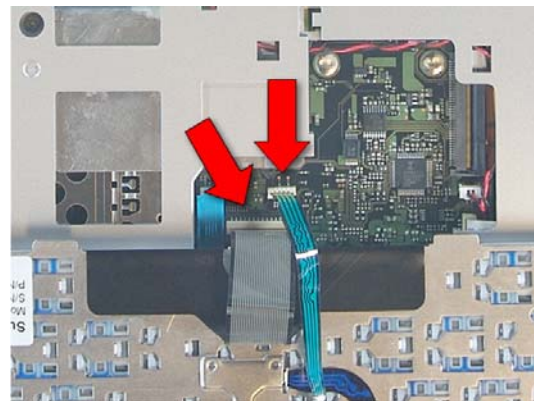
7. Open the LifeBook and lay it flat.



8. Use a plastic pry tool to remove the keyboard upper trim.



9. Lift the top edge of the keyboard up and turn it over



10. Disconnect the keyboard and ClickPoint cables from the system board by pulling them gently.



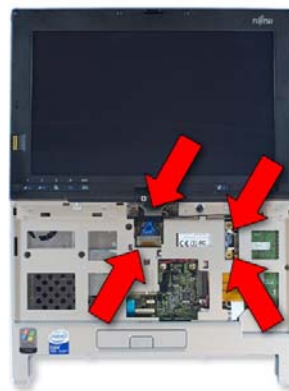
11. Tilt the Display up and rotate it ¼ turn.



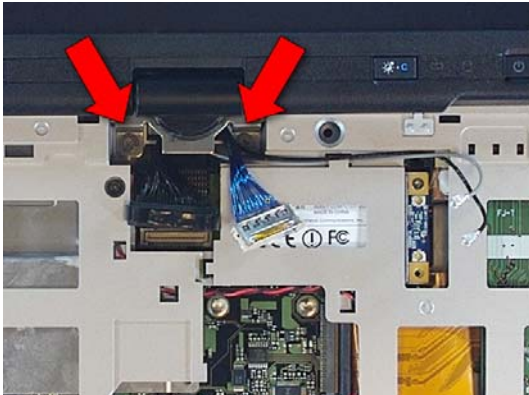
12. Slide out the lower hinge cover.



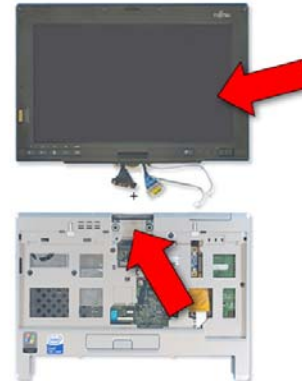
13. Turn the Display back and lay it down.



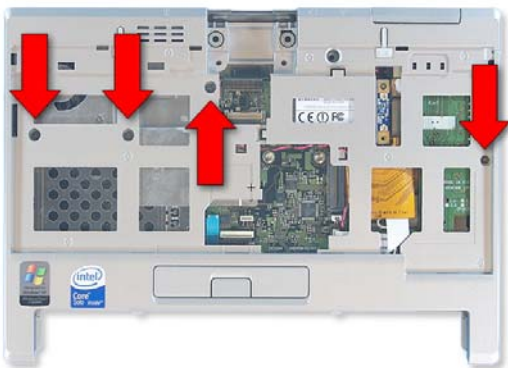
14. Disconnect 2 Display cables from the system board and the 2 antenna cables from the WLAN Card.



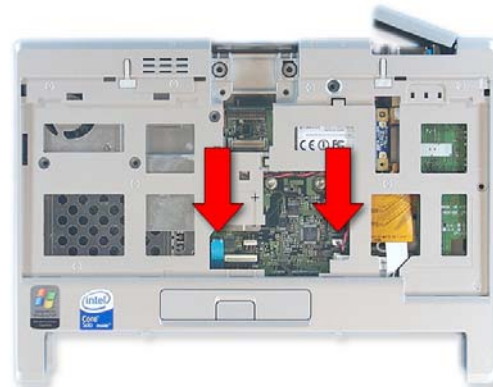
15. Extract 2 screws from the Display hinge.



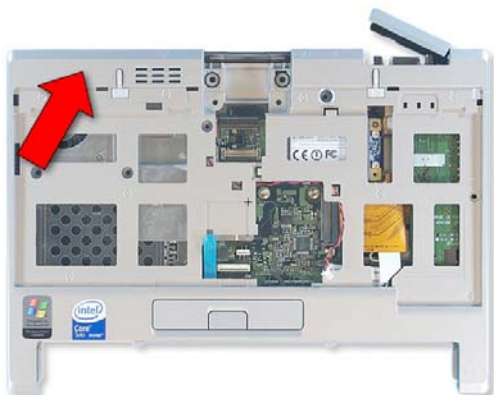
16. Lift the Display off the lower assembly.



17. Extract 4 screws from the upper case and open the external VGA connector cover.



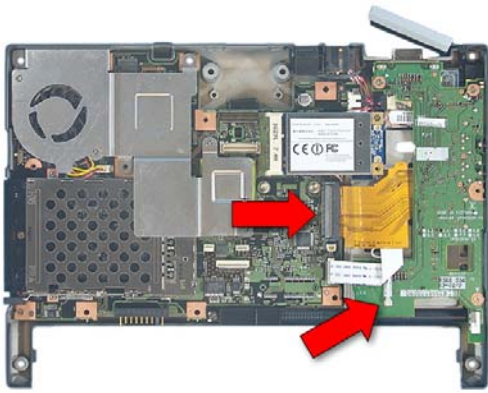
18. Disconnect the ClickPoint button cable and the speaker cable from the system board.



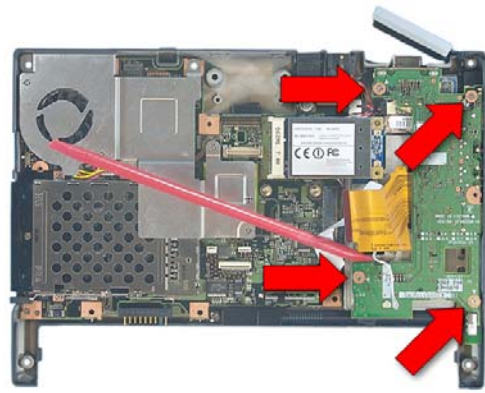
19. Lift off the upper case.



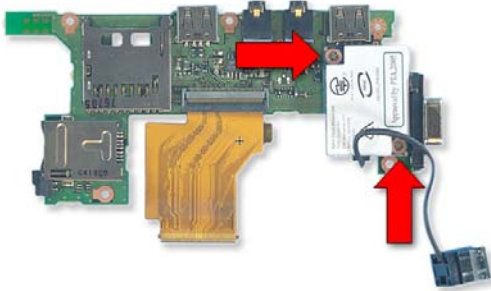
20. Extract 2 hex screws from the external VGA connector.



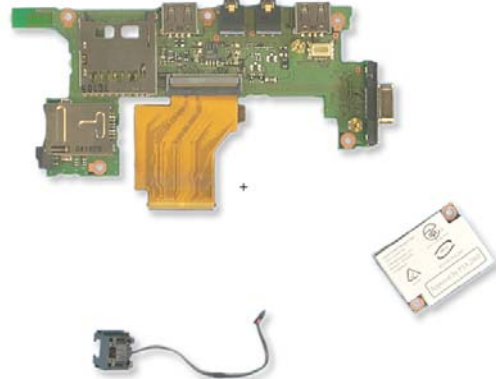
21. Disconnect the IO Board ribbon cable and the Bluetooth antenna cable. -2762_close



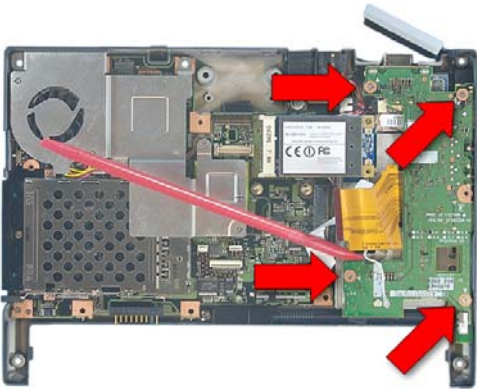
22. Extract 4 screws from the IO Board and lift it and the RJ11 connector out of the lower case.



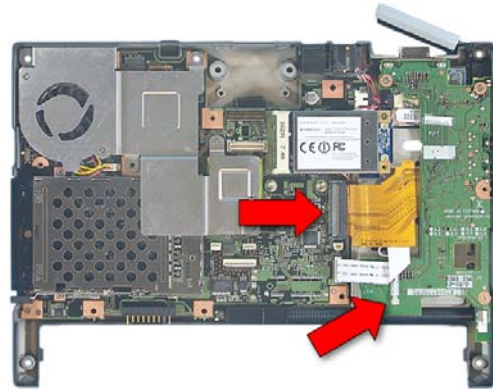
23. Turn the IO Board over, extract 2 screws from the modem and lift it off.



24. Transfer the connector to the new Modem, press it onto the new IO Board and secure it with 2 screws.



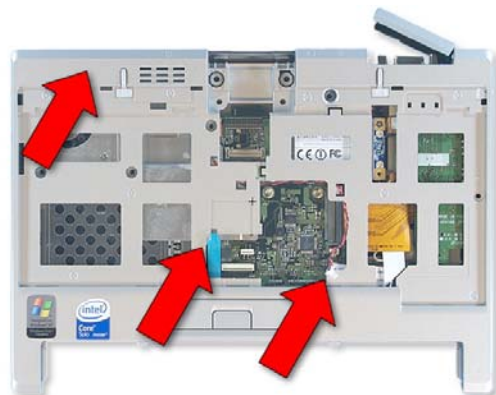
25. Insert the IO Board into the lower case and secure it with 4 screws.



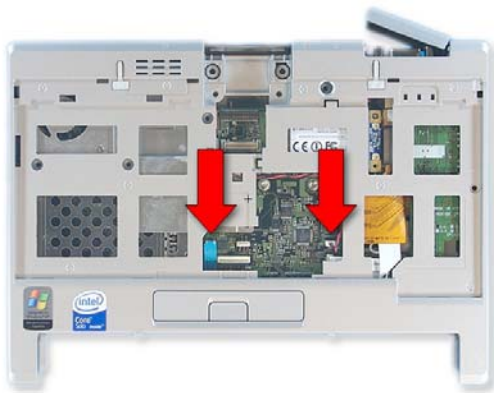
26. Connect the IO Board ribbon cable and the Bluetooth antenna cable.



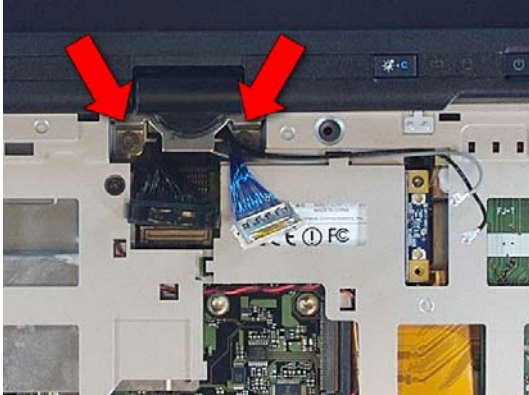
27. Insert 2 hex screws into the external VGA connector.



28. Place the upper case and connect the ClickPoint button cable and the speaker cable.



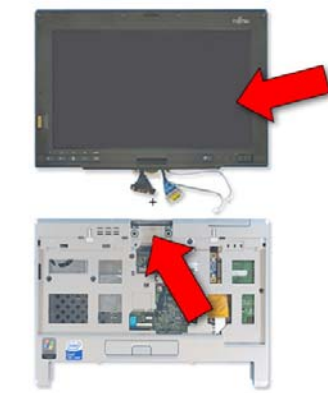
29. Close the external VGA connector cover and secure the upper case with 4 screws.



31. Secure the display with 2 screws in the hinge.



33. Tilt the display up and rotate it ¼ turn.



30. Extract 3 screws from the PCB.



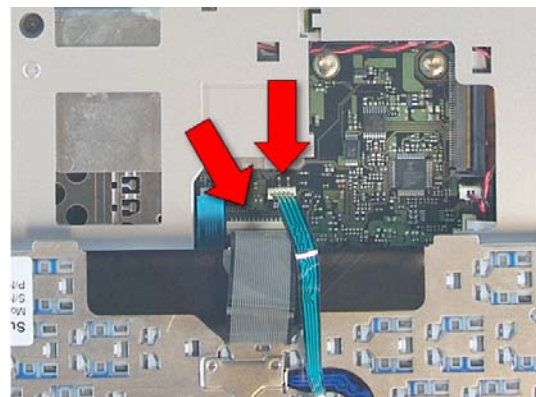
32. Attach the 2 display cables to the system board and the 2 antenna cables to the WLAN card.



34. Slide the lower hinge cover into place.



35. Turn the Display back and lay it down.



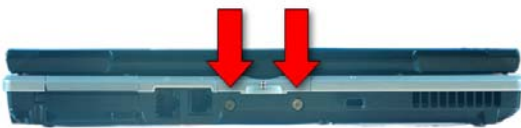
36. Plug in the cables for the keyboard and ClickPoint.



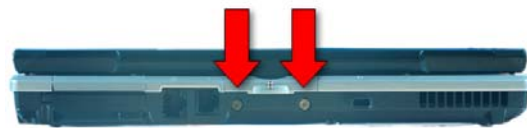
37. Turn the keyboard over and slide it into place



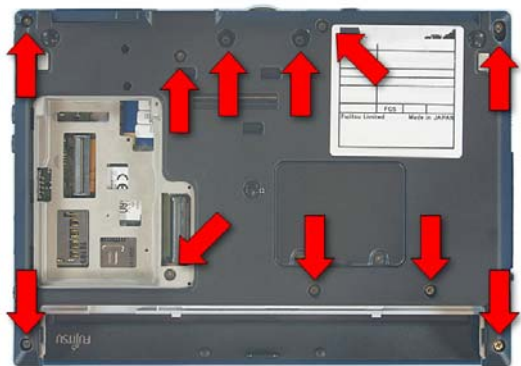
38. Press the keyboard upper trim into place.



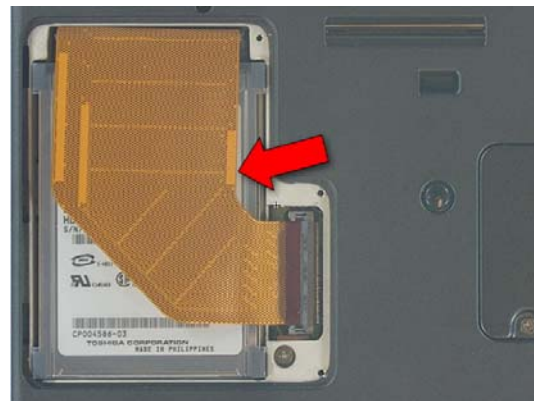
39. Close the LifeBook and turn it over.



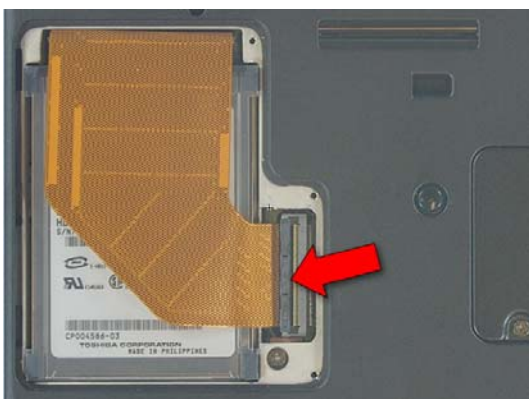
40. Insert 2 screws into the rear of the LifeBook.



41. Insert 11 screws into the lower case.



42. Insert the Hard Drive.



43. Press the latch down to lock the cable into place.



44. Replace the Drive cover and secure it with 3 screws.



45. Replace the battery.