

Technical Procedure

## LifeBook P1610

# Fingerprint Sensor Replacement

ESD Precautions are required when working on this LifeBook computer.

Make sure the LifeBook is turned off before beginning this procedure.



1. Turn the LifeBook over and remove the battery



2. Remove 8 screw covers from the front of the display.



3. Extract 8 screws from the front of the display.



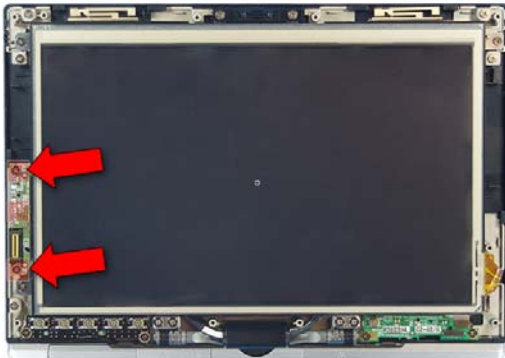
4. Using the plastic pry tool pry around the perimeter of the display to release the front cover from the rear.



5. Gently slide the pry tool between the screen and the front cover to release the tape.



6. Lift the front cover off.



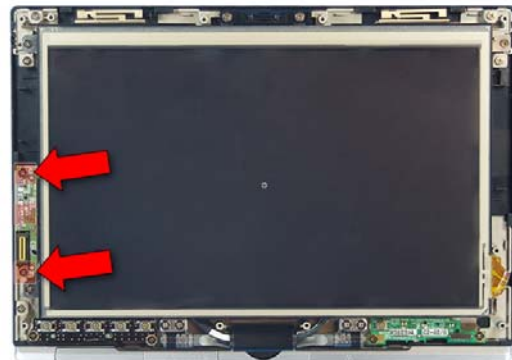
7. Extract 2 screws from the fingerprint sensor board.



8. Disconnect the cable from the board and lift it out.



9. Connect the cable to the new fingerprint sensor board and place it into the rear cover.



10. Secure it with 2 screws.



11. Press the front cover into place and secure it with 8 screws.



12. Place 8 screw covers over these screws.



13. Lift the display up and turn it around.



14. Lay it back down and turn the LifeBook over.



15. Replace the battery.